



## AiM InfoTech

### Edelbrock ProFlo4 ECU

Release 1.00

---



ECU



# 1 Models and years

---

This document explains how to connect AiM devices to the vehicle Engine Control Unit (ECU) data stream.

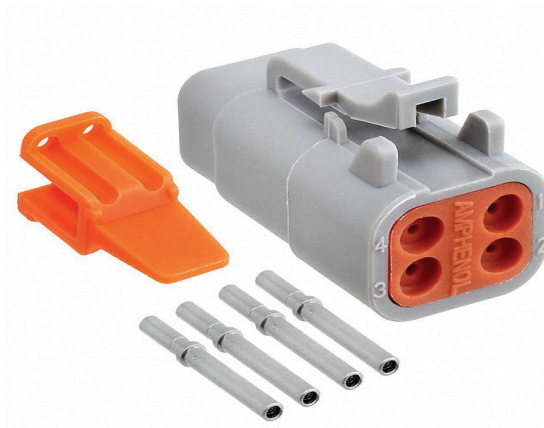
Supported models and years are:

- ProFlo4

# 2 Wiring connection

---

These models feature a communication protocol based on CAN, accessible through the DTM06-4S female connector. For this installation refer to the following pinout of the DTM06-4S and its connection table.



DTM06-4S connector pin	Function	AiM cable	AiM cable color
1	CAN+	CAN-High	White
2	CAN-	CAN Low	Blue
3	12 V	V Battery	Red
4	Ground	GND	Black

### 3

## Race Studio configuration

---

Before connecting the ECU to AiM devices set this up using AiM Race Studio software. The parameters to select in the device configuration are:

- ECU manufacture **Edelbrock**
- ECU model **ProFlo4 (Only RS3)**

### 4

## “Edelbrock – ProFlo4” protocol

---

Channels received by AiM devices configured with "Edelbrock – ProFlo4" protocol are:

CHANNEL NAME	FUNCTION
RPM	Engine RPM
TH2o	Water temperature
TAIR	Air temperature
Fuel_Press	Fuel pressure
MAP	Manifold air pressure
Spark_Advance	Spark advance
TPS	Throttle position sensor
Inj_Duty	Injection duty cycle
IAC	Idle air control
CLC1	Closed loop correction
VBatt	Voltage battery
AFR	Air fuel ratio
Fan_1 Status	Output fan1 status
Fan_2 Status	Output fan2 status

**Technical note:** not all data channels outlined in the ECU template are validated for each manufacture's model or variant; some of the outlined channels are model and year specific, and therefore may not be applicable.