



AiM Infotech

MBE 998 ECU

Release 1.01



998

ECU



This tutorial explains how to connect MBE 998 ECUs to AiM devices.

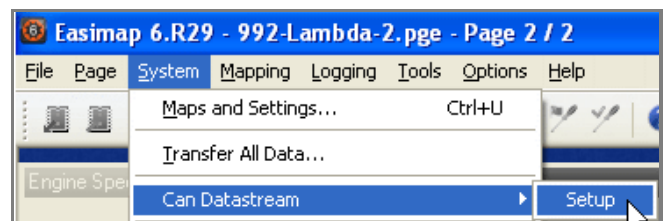
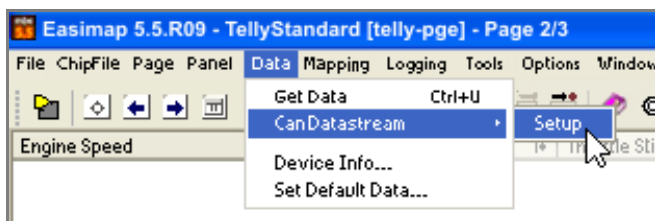
1

Software setup

MBE 998 ECUs come with EasyMap software. For a correct communication with AiM devices set it up as follows:

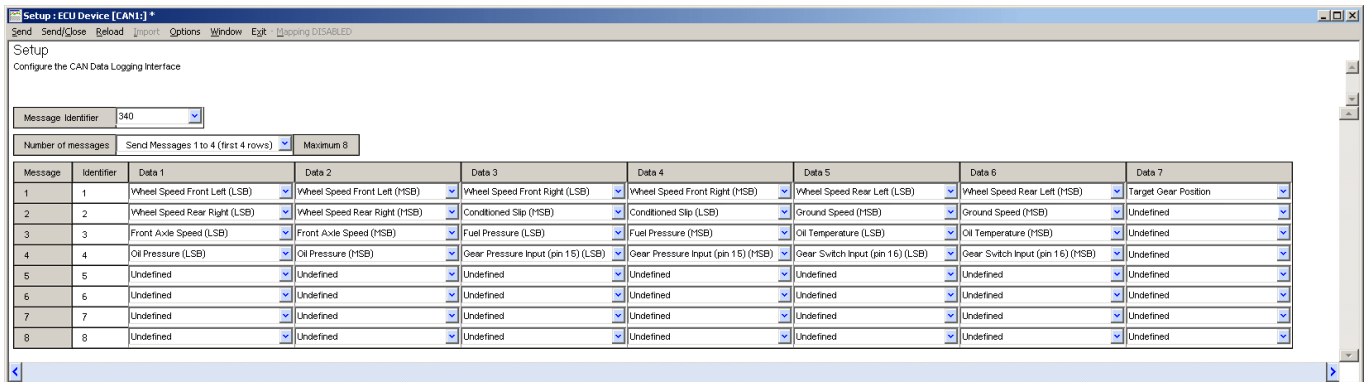
- Connect the ECU to your PC and power it.
- Run Easy Map and follow this path:
 - Data → CAN Datastream → Setup if you have EasyMap 5.5 release
 - System → Can Datastream → Setup if you have EasyMap 6 release

Here below you see images of EasyMap 5.5 – on the left – and EasyMap 6 – on the right.



- This way the software reads information coming from the ECU and opens a new window to configure the CAN communication;

- Parameters must be configured in the right sequence and with the right sequence; complete the table with the information suggested here below; MBE 998 ECU configuration requires 998 Traction control scheme too:



Please note: data logging configuration with EasiMap software is intended for expert users only. The software can of course be changed by MBE. Refer to www.mbesystems.com for further information.

- once all parameters configured press "Send" and choose "ECU Device" if requested; the configuration is stored in ECU memory
- close configuration window and quit the program
- before connecting MBE ECU to AiM device enable "Broadcast Mode" ensuring a nominally zero voltage (or open circuit) on fuel trim and ignition trim inputs.

2 Wiring connection

MBE 998 ECU features a bus communication protocol based on CAN on J2 36 pins front connector. Here below is connection table.

J2 36 Pins connector pin	Pin function	AiM cable
6	CAN High	CAN+
7	CAN Low	CAN-

3

AiM device configuration

Before connecting the ECU to AiM device set this up using AiM Race Studio software. The parameters to select in the device configuration are:

- ECU manufacturer "MBE"
- ECU Model "998CAN"

4

Available channels

Channels received by AiM devices connected to "MBE" "998CAN" protocol are:

ID	CHANNEL NAME	FUNCTION
ECU_1	MBE_FRONT_LEFT	Front left wheel speed
ECU_2	MBE_FRONT_RIGHT	Front right wheel speed
ECU_3	MBE_REAR_LEFT	Rear left wheel speed
ECU_4	MBE_REAR_RIGHT	Rear right wheel speed
ECU_5	MBE_SLIP	Slip percentage
ECU_6	MBE_GROUND_SPD	Ground speed
ECU_7	MBE_FRONT_AXLE	Front axle speed
ECU_8	MBE_FUEL_PRESS	Fuel pressure
ECU_9	MBE_OIL_TEMP	Oil temperature
ECU_10	MBE_OIL_PRESS	Oil pressure
ECU_11	MBE_GEAR_PRESS	Gearbox pressure
ECU_12	MBE_GEAR_SWITCH	Gear switch
ECU_13	MBE_TARG_GEAR	Gear target