



FAQ

Frequently asked questions

SmartyCam and AiM devices





Configuring

1 – SmartyCam and AiM devices

Question:

How can I connect my SmartyCam HD/GP HD with AiM devices and configure both?

Answer:

Those AiM devices that support SmartyCam, in addition to the physical connection with the proper cables need, together with SmartyCam, a software setup. The table below shows which software you need to install on your PC:

• SoloDL	RS2
• MXL	RS2
• EVO4	RS2
• ECU Bridge	RS2
• Solo 2 DL	RS3
• MXL2	RS3
• MXS 1.2/MXS Strada 1.2	RS3
• MXG 1.2/MXG 1.2 Strada	RS3
• MXP/MXP Strada	RS3
• MXm	RS3
• EVO4S	RS3
• EVO5	RS3
• SmartyCam	RS3

To make the communication between SmartyCam and AiM devices possible, you need to:

- physically connect the devices
- set AiM devices up using the proper software
- configure SmartyCam with RS3



Configuring

1.1 – Physical connection

To physically connect the devices, use SmartyCam CAN cable; available versions are:

- SmartyCam CAN cable: length 2m: **V02566070**
- SmartyCam CAN cable: length 4m: **V02566060**

Each AiM device is equipped with a connector or a cable labelled “EXP” that is to be connected to SmartyCam “EXT” connector:

- **SoloDL/Solo 2 DL:** connect SmartyCam CAN cable to the 5 pins connector placed under the device
The 7 pins connector is used to connect with the vehicle ECU (via CAN, K-Line or RS232) and the external power source
- **EVO4/4S:** connect SmartyCam CAN cable to the connector labelled “Exp”
- **EVO5:** connect SmartyCam CAN cable to the cable labelled “EXP” of 37 pins connector harness included in the kit
- **MXL2, MXS 1.2, MXG1.2/MXP:** connect SmartyCam CAN cable to the cable labelled “EXP” of 37 pins connector harness included in the kit
- **MXS 1.2 Strada/MXG 1.2 Strada/MXP Strada:** connect SmartyCam CAN cable to the cable labelled “EXP” of 14 pins connector harness included in the kit
- **MXL Strada/Pista:** connect SmartyCam CAN cable to the 5 pins connector placed rear right of the device
- **MXL Pro05:** connect SmartyCam CAN cable to the cable labelled “EXP” of 22 pins connector harness included in the kit
- **ECU Bridge:** connect the camera CAN cable to 5 pins connector of the device.

If you need to connect more expansions we suggest to use a Data Hub – AiM CAN connections multiplier – available in different versions with different part numbers:

- two ways Data Hub with 40 cm cable: **X08HB2GK0**
- four ways Data Hub with 40 cm cable: **X08HUB010**
- four ways Data Hub with 150 cm cable: **X08HUB150**

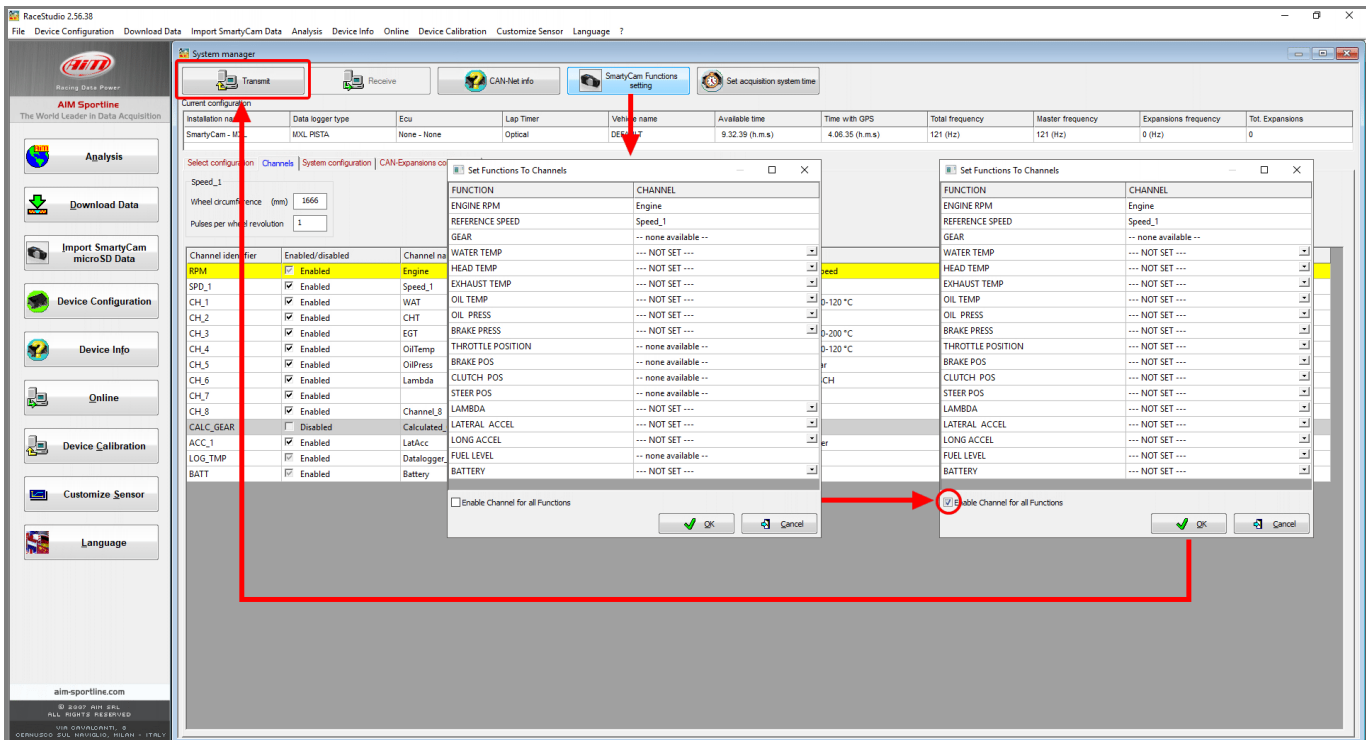
Configuring

1.2 – RS2 configuration

MXL, SoloDL, EVO4 and ECU Bridge are only configurable using RS2. Latest updates are always downloadable from Download Area -> Software of www.aim-sportline.com.

Proceed as follows:

- run RS2
- connect your device to the PC and press "Device Configuration"
- select your device and choose the configuration to be modified or create a new one
- complete the device setup
- click "SmartyCam Functions Settings", in the page top keyboard: a table appears where you can associate different functions (left column) to each channel (right column); the channels list is filtered according to the functions set; user can unlock the filtering and have free choice checking "Enable Channels for all Functions" box
- once the functions associated to the channels click "OK" and then "Transmit" to transmit the configuration to the device



Configuring

1.3 – RS3 configuration

Solo 2 DL, MXL2, MXG 1.2, MXG 1.2 Strada, MXS 1.2, MXS 1.2 Strada, MXP, MXP Strada, MXm, EVO4S ed EVO5 are only configurable with RS3. Latest updates are always downloadable from Download Area -> Software of www.aim-sportline.com.

Proceed as follows:

- run RS3
- connect your device to the PC and enter “Configurations” page
- select the configuration you need to modify or create a new one
- enter “SmartyCam Stream” layer: a table appears where you can associate different functions (left column) to each channel (right column); the channels list is filtered according to function set; user can unlock the filtering and have free choice checking “Enable Channels for all Functions”
- once the functions associated to the channels click “Transmit” to transmit the configuration to the device

The screenshot shows the RaceStudio3 interface with the 'SmartyCam Stream' configuration window open. The window has a menu bar with 'Save', 'Save As', 'Close', and 'Transmit'. Below the menu bar, there are tabs for 'Channels', 'ECU Stream', 'CAN2 Stream', 'Math Channels', 'Parameters', 'Shift Lights and Alarms', 'Trigger Commands', 'Display', 'SmartyCam Stream', 'CAN Expansions', and 'CAN Output'. The 'SmartyCam Stream' tab is active, showing a table with two columns: 'SmartyCam Function' and 'Channel'. The table lists various functions like Engine RPM, Speed, Gear, Water Temp, Head Temp, Exhaust Temp, Oil Temp, Oil Press, Brake Press, Throttle Pos, Brake Pos, Clutch Pos, Steering Pos, Lambda, Fuel Level, and Battery Voltage. The 'Channel' column shows the assigned channel for each function, such as RPM, GPS Speed, and Battery. A red arrow points from the 'Transmit' button to the 'SmartyCam Stream' tab. Another red arrow points from the 'Enable all channels for functions' checkbox in the right pane to the same checkbox in the left pane.

SmartyCam Function	Channel
Engine RPM	RPM
Speed	GPS Speed
Gear	--- No available channel ---
Water Temp	--- No available channel ---
Head Temp	--- No available channel ---
Exhaust Temp	--- No available channel ---
Oil Temp	--- No available channel ---
Oil Press	--- No available channel ---
Brake Press	--- No available channel ---
Throttle Pos	--- No available channel ---
Brake Pos	--- No available channel ---
Clutch Pos	--- No available channel ---
Steering Pos	--- No available channel ---
Lambda	--- No available channel ---
Fuel Level	--- No available channel ---
Battery Voltage	Battery

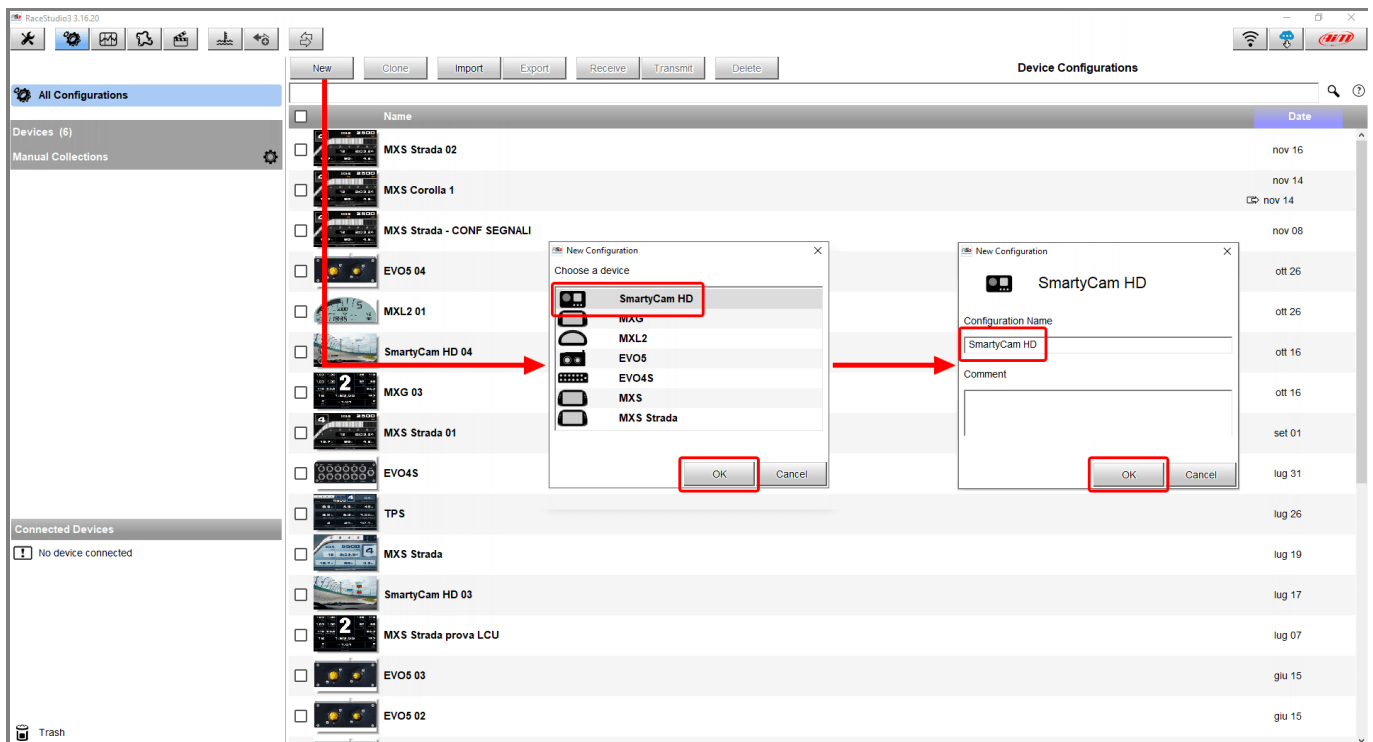
Configuring

1.4 – SmartyCam configuration with RS3

To setup SmartyCam HD/GP HD you need to use RS3 software (RS2 does not support cameras).

Proceed as follows:

- run RS3
- connect SmartyCam to the PC using the mini USB cable you find in the kit
- enter "Configuration" page and select the configuration to modify or create a new one; to create a new configuration press "New" button, select "SmartyCam HD" among the available devices, fill in the configuration name and press "OK" as shown here below.



Configuring

The software opens SmartyCam configuration page.

- right side of the window shows many overlay sets that can be dragged and dropped into the left main window
- bottom left of the page each overlay properties appear in specific tabs that need to be setup
- once SmartyCam setup click "Save" in keyboard placed on top of overlay layers, go back to configurations page and transmit the configuration to SmartyCam.

