



FAQ

Frequently asked questions

Movies comparison




Race Studio 3

Movies comparison

Question:

How can I compare two recorded movies with SmartyCam HD/GP HD?

Answer:

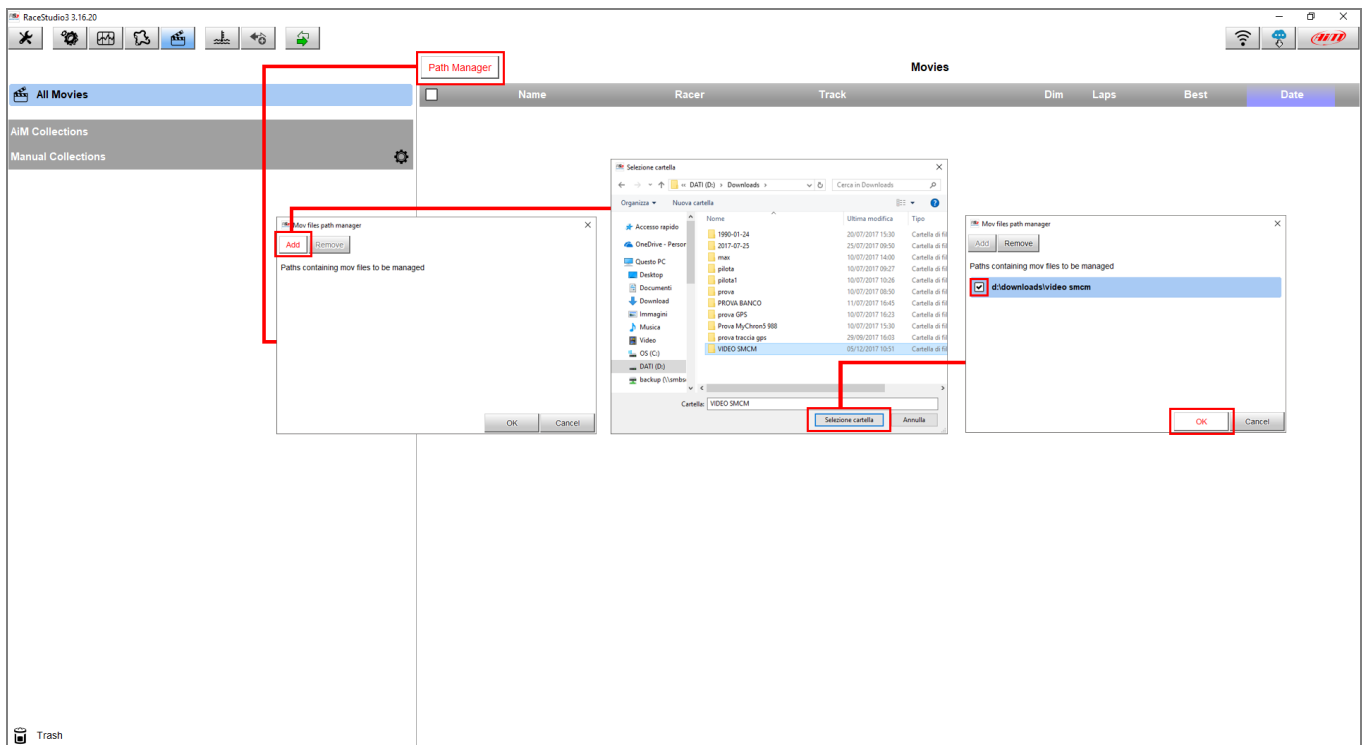
The movies from two sessions can be compared in Race Studio 3 Movies section (main menu  icon), following the procedure explained below.

N.B.:

- 1. The comparison is allowed between two videos recorded with SmartyCams HD equipped with the AiM GPS receiver.**
- 2. The movies comparison cannot be saved in a new video file**
- 3. The software does not perform a prior validation of the selected files: the comparison matching is up to the user choice (i.e.: do not select movies recorded in different tracks)**

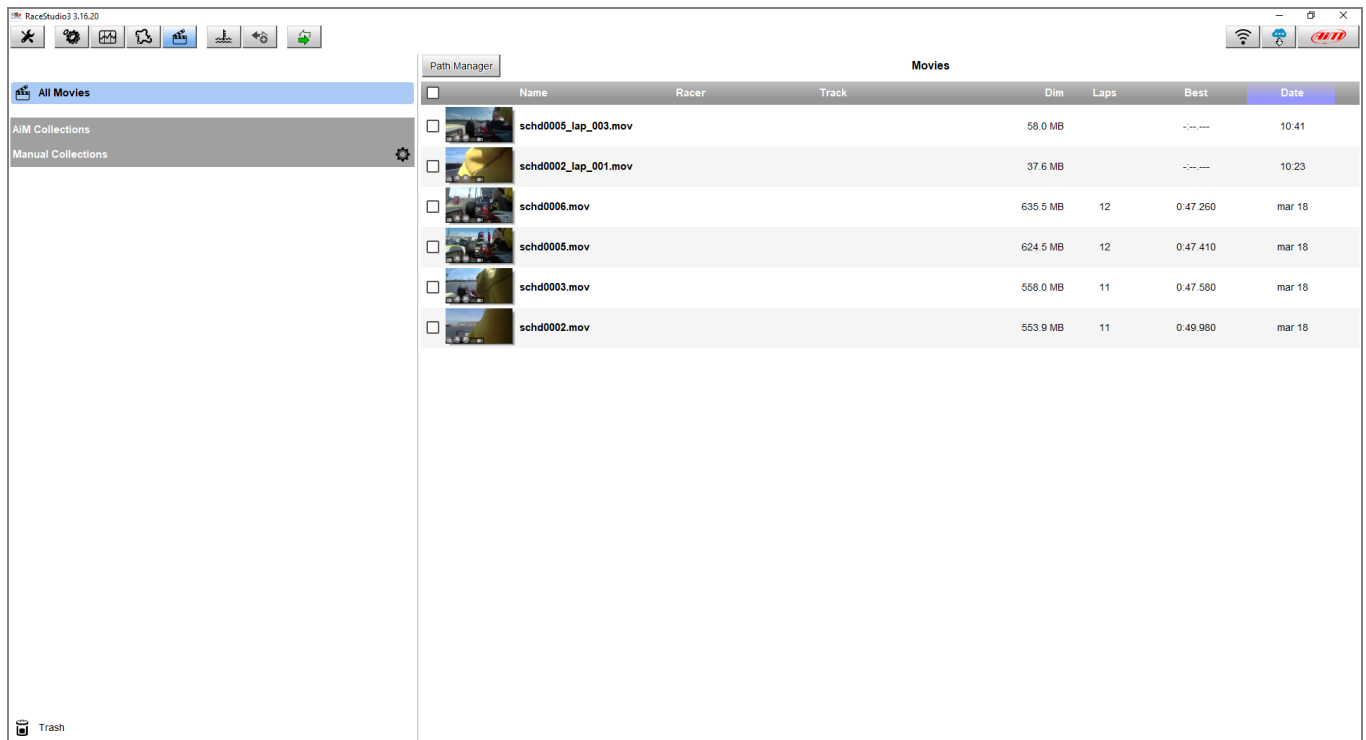
Movies

- Run Race Studio 3 and enter in the Movies section: the main page appears.
- Click "Path Manager", to display the window that gives the possibility to select the PC folder in which the .mov files are stored. Click "Add" to search the PC folder, select and add it/them to the list (each folder will be automatically supervised from the software, so to update the videos list when a new file is saved in it). Press "OK" to confirm the selection.



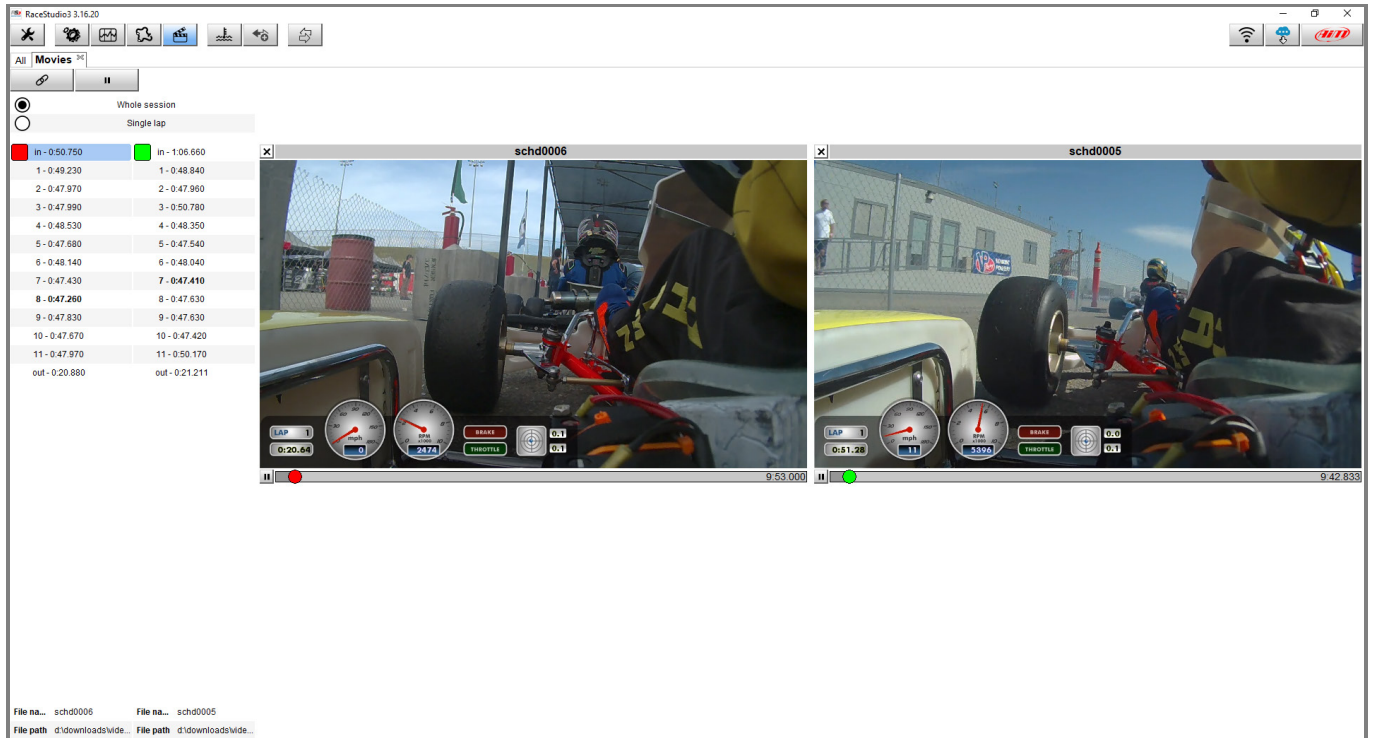
Movies

- The window closes and all the stored videos in the selected folders will appear in the main page list.



- Selecting a movie, the video player page is automatically opened in Whole session mode, showing the full movie. The lap times list allows to easily choose the lap to be reproduced. With the Single Lap mode, the comparison between two laps of the same session is enabled, which are selected through the two radio buttons columns in the lap times list.
- Opening a second movie from the All Movies list, it is possible to select two laps from two different sessions for a parallel movies comparison. Each movie can be closed independently from the other one.

Movies



In both cases, the two modes are available:

- **Whole Session:** it shows the entire movie; clicking on the wanted lap, the movie starts from that lap beginning. Clicking on the scissors icon, it is possible to export the single lap video file.
- **Single lap:** only the selected lap is shown. The movies comparison starts when the user selects a lap from the right column and only the current laps movies are displayed.

When the chain rings icon is closed, the movies are synchronized on a time base, so the cursor placement and moving is restricted for the two windows. When the chain rings are opened, the movies can be shown independently one from the other.