



FAQ

Frequently asked questions

Odometers management with RS3




Race Studio 3

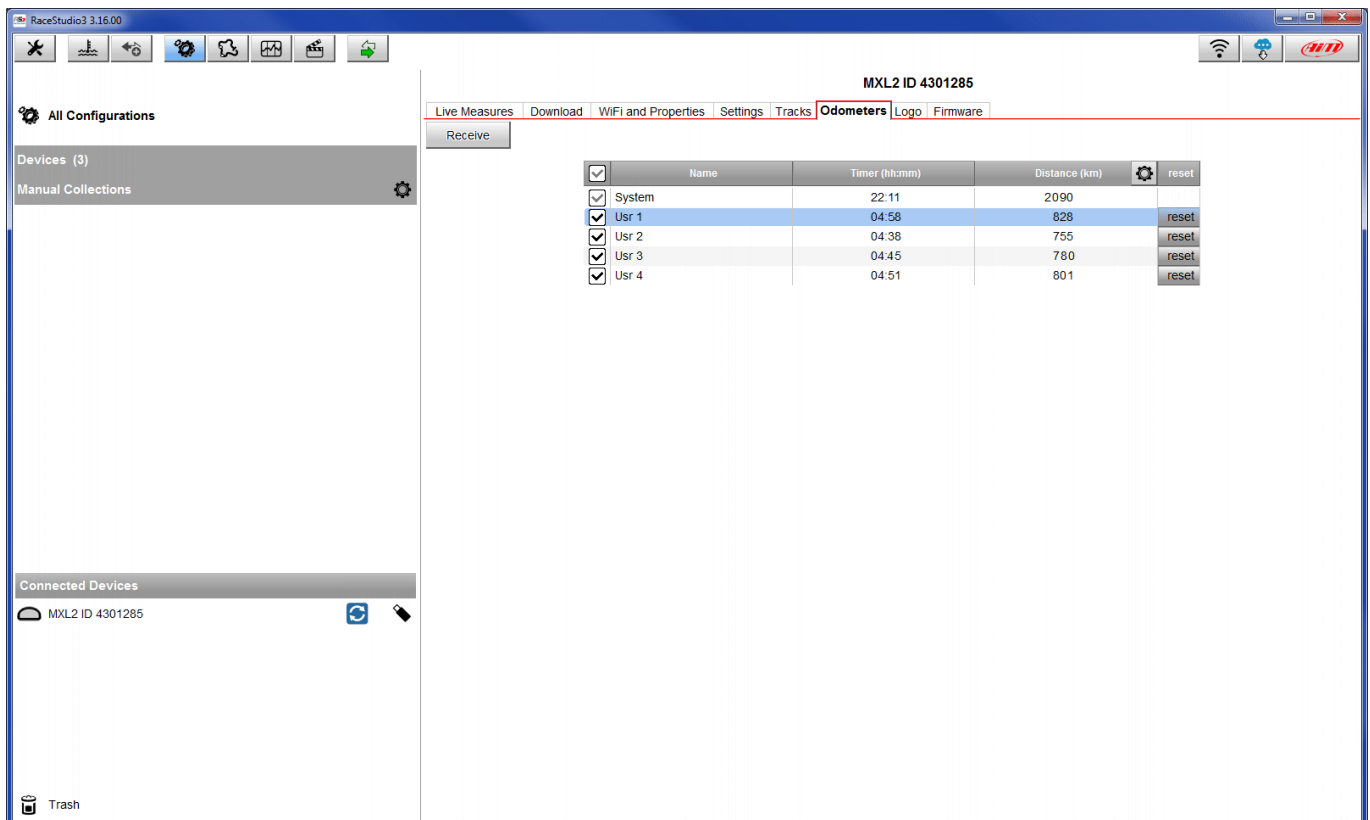
Odometers management with RS3

Question:


How can I manage the system odometers using RS3?

Answer:

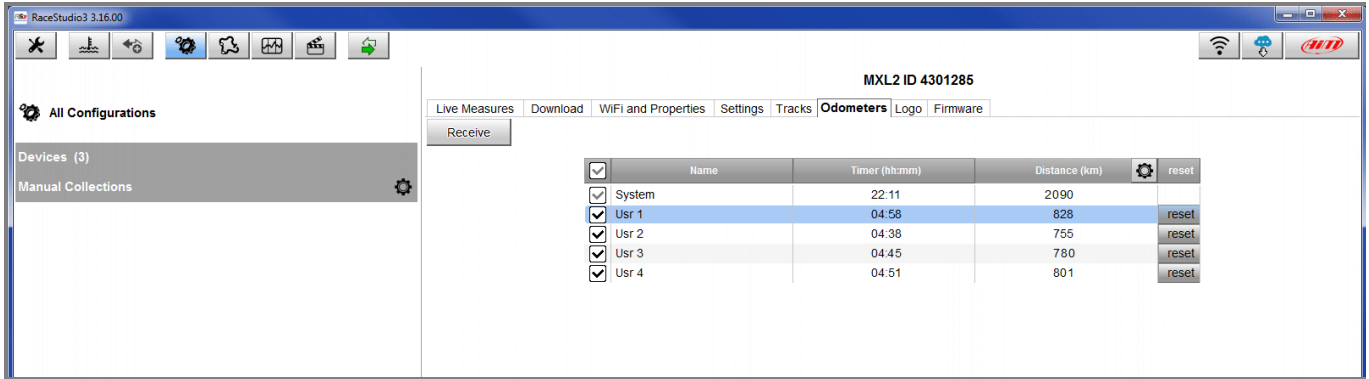
- Run RS3
- connect your device to a PC
- enter "Configurations"  page and click the name of your device in "Connected Devices" section
- the related page shows up: by default it shows "Live Measures" layer
- click "Odometers": a table appears: it shows a System odometer and four User odometers



The screenshot shows the RaceStudio3 3.16.00 interface. The main window displays the 'Odometers' page for device MXL2 ID 4301285. The page includes a 'Receive' button and a table with the following data:

<input checked="" type="checkbox"/>	Name	Timer (hh:mm)	Distance (km)		reset
<input checked="" type="checkbox"/>	System	22:11	2090		
<input checked="" type="checkbox"/>	Usr 1	04:58	828		reset
<input checked="" type="checkbox"/>	Usr 2	04:38	755		reset
<input checked="" type="checkbox"/>	Usr 3	04:45	780		reset
<input checked="" type="checkbox"/>	Usr 4	04:51	801		reset

Race Studio 3



Odometers work this way:

- “System”: cannot be disabled nor reset or renamed; you can modify measure unit (miles or metres) and decimal places clicking on the setting icon on the right of “Distance” column;
- “User”: can be disabled; you can modify measure unit (miles or meters) and decimal places clicking on the setting icon on the right of “Distance” column; user odometer can be renamed

In the following table user odometers name and decimal places have been modified.

