



FAQ

Frequently asked questions

Adding split



Race Studio 3


Adding split

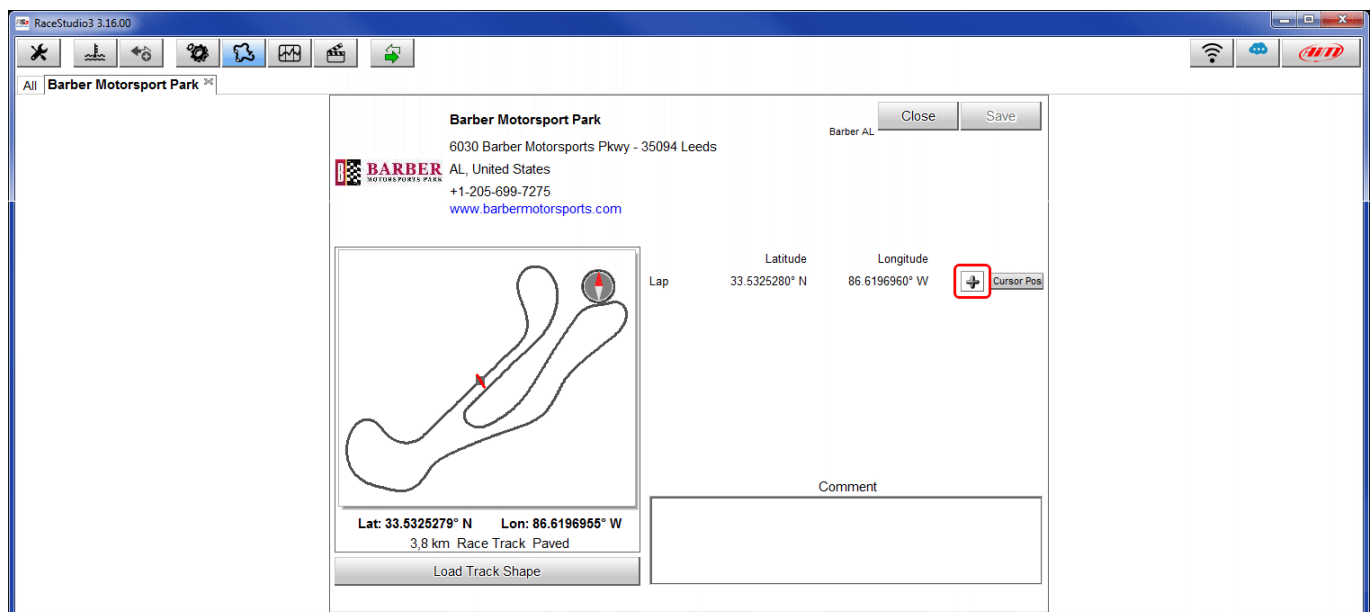
Question:

How can I add split to the track?

Answer:

This operation can be performed directly using Race Studio 3 and following this procedure:

- run Race Studio 3
- click  to enter Tracks section
- select the track the splits are to be added to and double click on it
- the page below shows up
- start/finish line is indicated by a red line on the track map; to add a split press "+"; you can add up to five splits.



Race Studio 3

- When a split has been added you can fix its coordinates in two ways:
 - placing the cursor in the desired point and pressing "Cursor Pos." (Split 1 in the image below)
 - filling manually in the coordinates (Split 2 in the image below)
- Press "Save" to save the modifications.

