



FAQ

Frequently asked questions

Configuring the TPS potentiometer with RS2



Race Studio 2

Configuring the TPS potentiometer with RS2

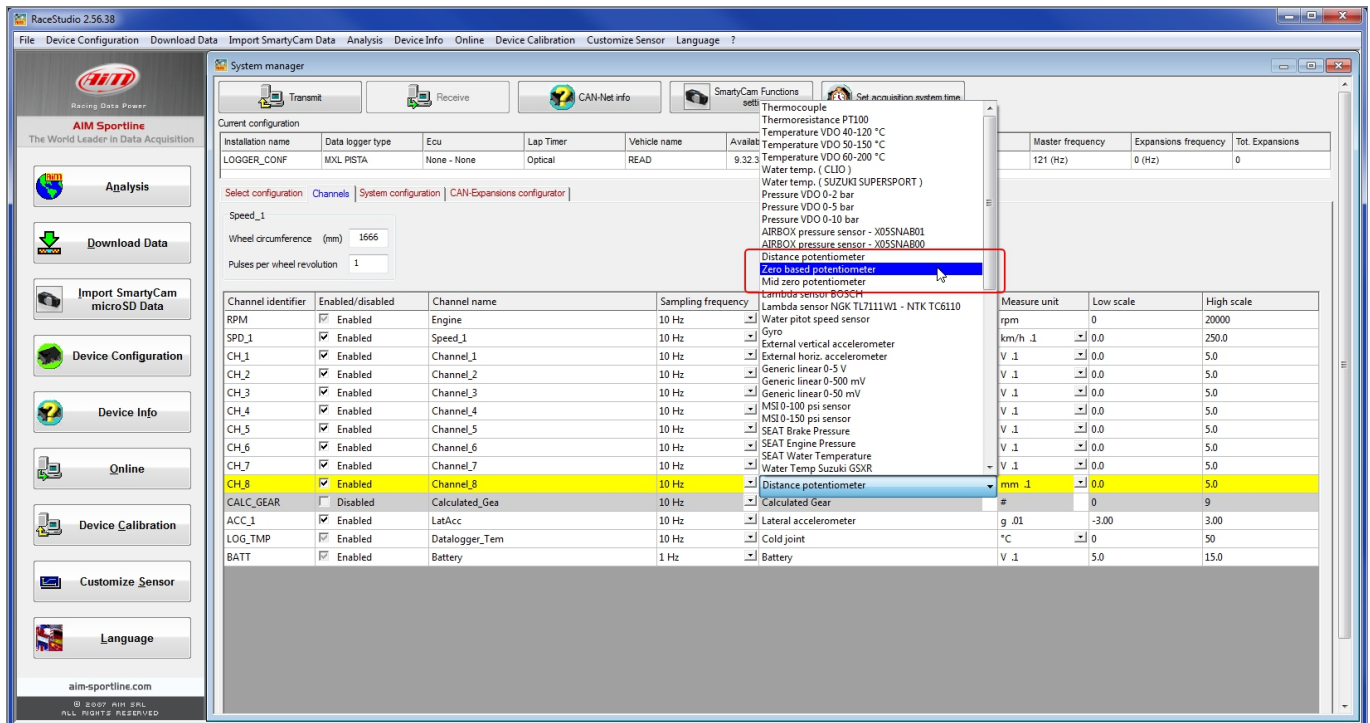
Question:

How do I configure the TPS potentiometer installed on my car/bike using RS2?

Answer:

To configure the TPS potentiometer with RS2:

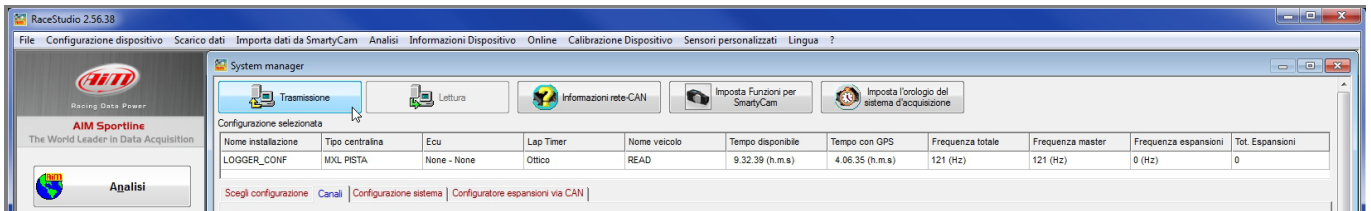
- run RS2.
- click "Device Configuration" on the software left keyboard and select the logger in use and the configuration to set the potentiometer on.
- enter "Channels" layer
- select the channel where to set the potentiometer on (in the example channel 8) and select "Zero based potentiometer" in "Sensor type" column as shown below; if you know precisely the total potentiometer travel you can choose the measure unit among millimeters and degrees; if not the suggested choice is percentage "% 1."



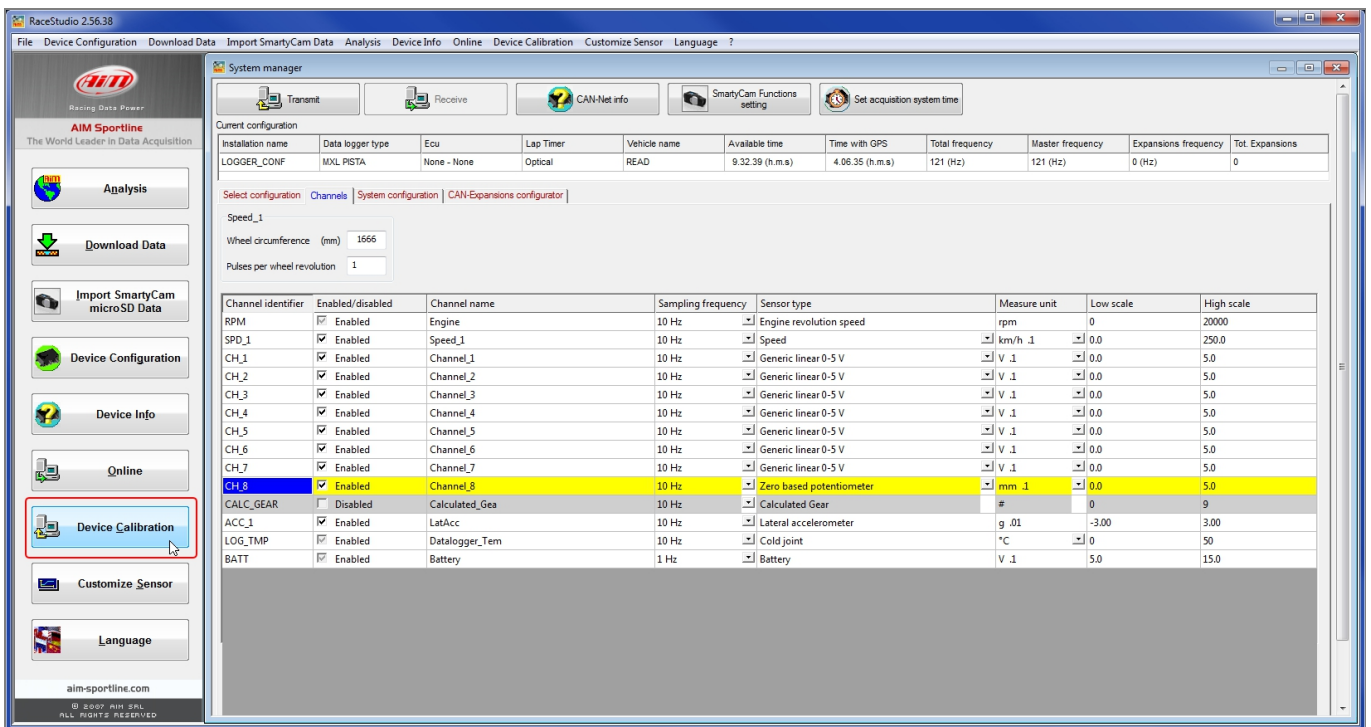


Race Studio 2

Transmit the configuration to the logger pressing "Transmit".



- Press "Device Calibration" to calibrate the potentiometer



Race Studio 2

Calibration panel shows up

- Press "Calibrate" button of "Zero based potentiometer".

The screenshot shows the RaceStudio 2.55.48 software interface. The main window displays the 'System manager' tab with a table of current configurations. A 'Sensor calibration' dialog box is open, showing two sections: 'Sensors to autocalibrate' and 'Sensors to calibrate'. The 'Sensors to calibrate' section contains a table with the following data:

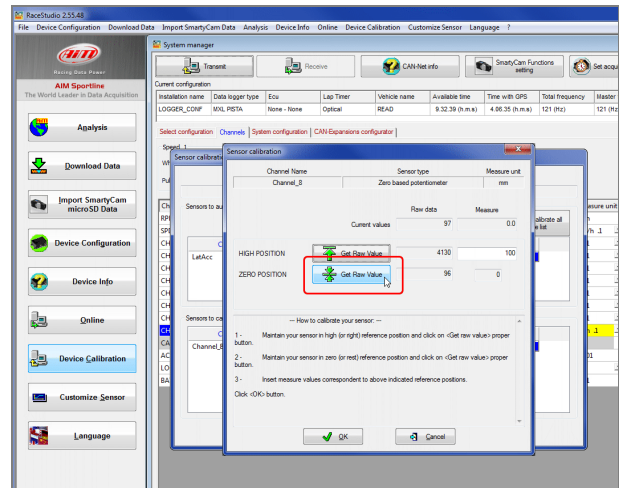
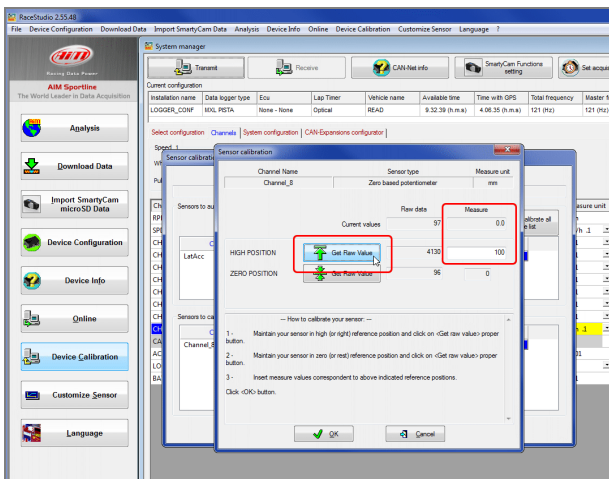
Channel name	Sensor type	Status	Click here to calibrate
LatAcc	Lateral accelerometer	Calibrated	Calibrate
Channel_8	Zero based potentiometer	Calibrated	Calibrate

The 'Calibrate' button for 'Channel_8' is highlighted with a red box. At the bottom of the dialog box, there are two buttons: 'Transmit calibration' (with a green checkmark) and 'Cancel'.

Race Studio 2

To learn the calibration points the software shows the related panel:

- with the throttle in its high position press "Get raw value" corresponding to high position, fill in the reference value in the related cells highlighted here below on the left.
 - "0" for zero position
 - "100" for high position
- With the throttle in its zero position press "Get raw value" corresponding to zero position (image here below on the right).
- Press "OK".



Race Studio 2

When calibration is over potentiometer status will turn to "Calibrated" and become red:

- Transmit the calibration to the logger pressing "Transmit Calibration".

