



FAQ

Frequently asked questions

Connection issues

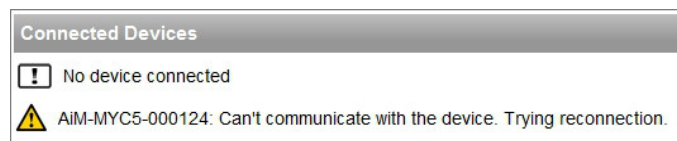


Wi-Fi

Connection issues

Question

My AiM system is working as an access point generating a network called "AiM-MYC5-000124". Why can't my PC be connected to this network at all, and why does Race Studio 3 show up on my computer with a display message of...?



Answer

Sometimes, especially when your PC is up and running for a while or it is repeatedly authenticated and unauthenticated on Wi-Fi networks, the Wi-Fi driver stops working correctly. In this case, you have to reset your Wi-Fi network interface card. Here's a one way to reset your Wi-Fi network interface card...

Open your Windows "Start" toolbar and type in "Network Connections", wait long enough so that the toolbar displays the wireless network connection/s and click on it (once). After the network connection/s show up (are displayed), you should be able to right-click on the wireless network connection and then click on "Disable". Once the icon is greyed out, it means that the interface is actually disabled. Repeat the process again... right-click on it and go to 'Enable' this time. Yet another suggestion is to restart your computer after the wireless network connection has been re-enabled.

