



FAQ

Frequently asked questions

Wi-Fi connection with virtualized Windows™



Wi-Fi

Wi-Fi connection with virtualized Windows™

Question:

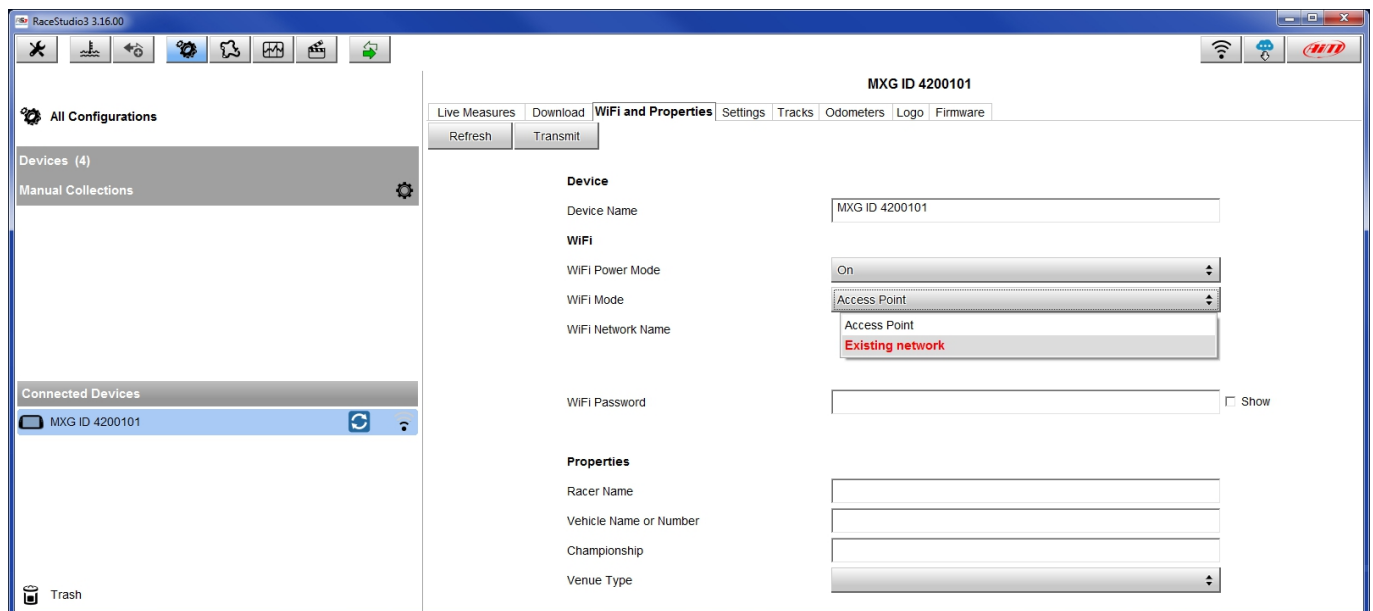
When I use Race Studio 3 from a virtualized Windows™ on Mac™ OS, the device connected via Wi-Fi may show different behaviors (it is quickly viewed / takes some time to be displayed / does not appear): why?

Answer:

To improve the software connectivity when you're using a virtualized Windows™ on Mac™ OS, it is suggested to use a Wi-Fi router (WLAN).

The WLAN router has an Access Point function, which means that many external devices can be connected.

To make it able to connect to the WLAN router, the AiM device mode must be set on "Existing Network" from the "Wi-Fi and Properties" layer in the Race Studio 3 menu. For further information, a document is available in the Download → Software → Race Studio 3 → Documentation area of the website www.aim-sportline.com.



Once set on "Existing Network", the device can be connected to an existing network.

The password to authenticate the device to the WLAN – where existing – can be set in Race Studio 3 (see above)