



GPS Manager – how to import tracks from Race Studio 3 database

When using GPS Manager, it is possible to update its tracks list, importing latest available from Race Studio 3.

The whole AiM tracks database can be imported, as well as tracks for one or more continents.

Below, all the downloadable “.zwd” files are present, that contain each track group:

World Tracks

https://www.aim-sportline.com/aim-software-betas/Software/Applications/GPSManager/release/export_rs3_tracks.zwd

Merged Tracks by Continent

Africa https://www.aim-sportline.com/aim-software-betas/Software/Applications/GPSManager/release/export_rs3_tracks_Africa.zwd

Asia https://www.aim-sportline.com/aim-software-betas/Software/Applications/GPSManager/release/export_rs3_tracks_Asia.zwd

Europe https://www.aim-sportline.com/aim-software-betas/Software/Applications/GPSManager/release/export_rs3_tracks_Europe.zwd

North America https://www.aim-sportline.com/aim-software-betas/Software/Applications/GPSManager/release/export_rs3_tracks_AmericaNorth.zwd

Center America https://www.aim-sportline.com/aim-software-betas/Software/Applications/GPSManager/release/export_rs3_tracks_AmericaCentral.zwd

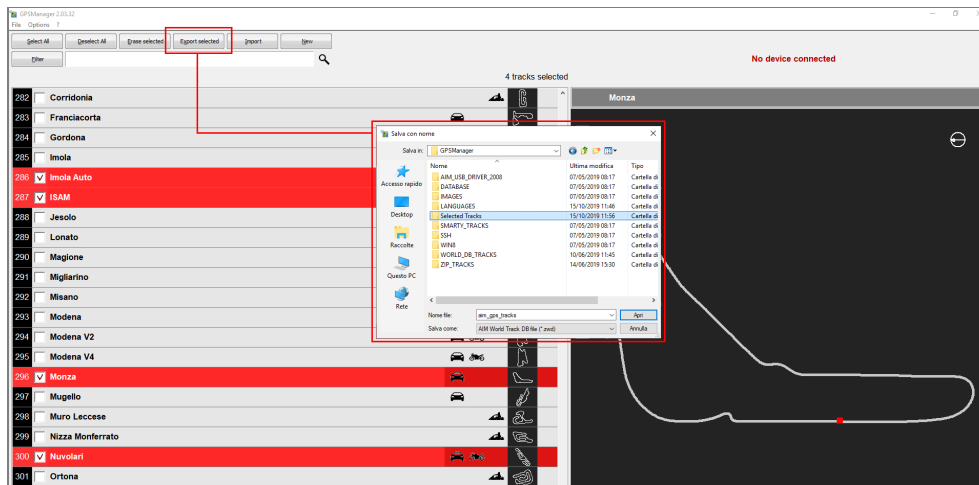
South America https://www.aim-sportline.com/aim-software-betas/Software/Applications/GPSManager/release/export_rs3_tracks_AmericaSouth.zwd

Oceania https://www.aim-sportline.com/aim-software-betas/Software/Applications/GPSManager/release/export_rs3_tracks_Oceania.zwd

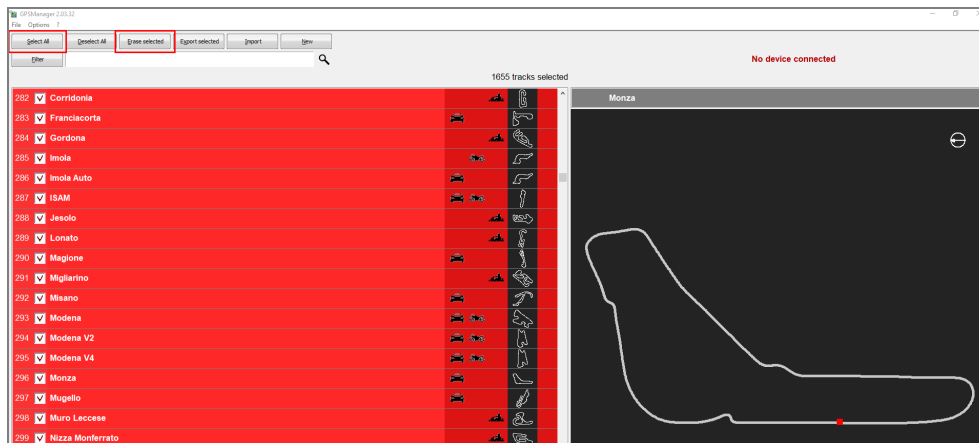
Here below, the steps to execute this operation are explained:

- From previous links, download file/s as for your need.
- Run GPS Manager, select your own tracks that you want to maintain in GPS Manager database (user tracks, for example), then click "Export Selected" (red box; image below) and confirm a download destination path on your PC, as well as file name. All the selected tracks will be merged in a single file on your PC.

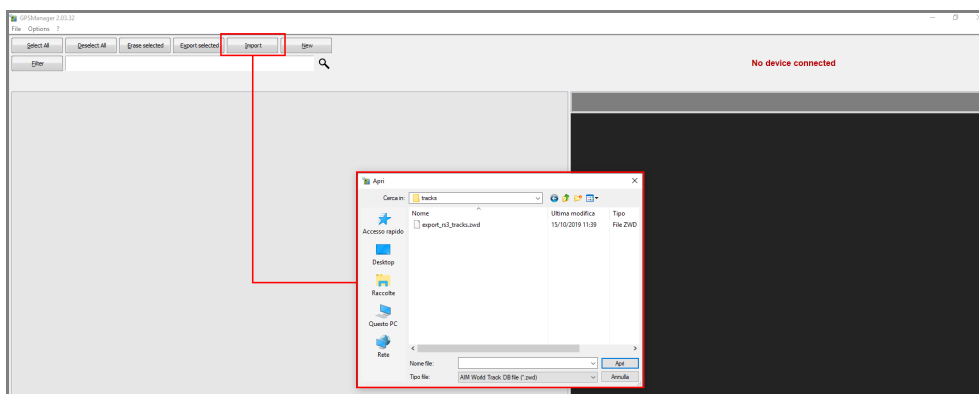
If user tracks have not been created by the user, it is possible to proceed erasing the whole database, as explained in the following page.



- Click “Select All”, so that all the tracks are ticked, then “Erase Selected” (red boxes; image below): in this way, the whole GPS Manager tracks database will be cleared.



- Press “Import” button (red box, image below), then select the file you have downloaded at first step (from the first document page links). Please, note that this procedure could take some minutes.



- Through the same process as in the previous step, press “Import” button again, selecting exported file at second step (the one which contains your user tracks), so to include them into the updated GPS Manager database. If user tracks have not been exported, this step must not be executed.

Once the full process is ended, tracks can be transmitted to the device.