



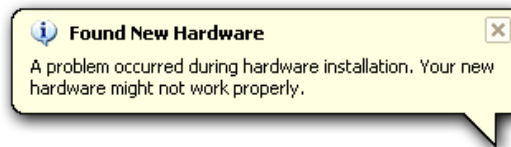
SmartyManager

Driver recovery procedure

User manual



If, for some reason, an error occurs during the automatic USB driver installation for **SmartyCam**, Windows should provide with the informational prompt shown here below.

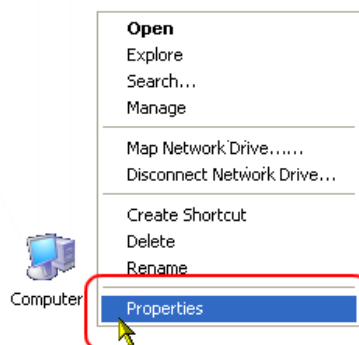


Should a USB driver installation error occur, unplug SmartyCam from the computer, restart the computer, and plug SmartyCam back into the computer upon restart; the installation error should then be cleared.

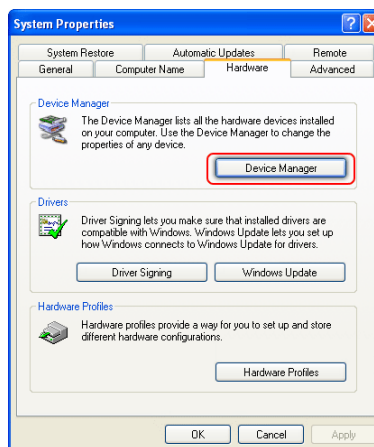
If the USB driver installation error persists, it may be necessary to uninstall the device drivers and re-install them manually.

The following instructions have been specifically outlined for Microsoft Windows XP operating systems. If a later release operating system (like Vista, 7, etc.) is being used, the procedure for USB driver un-installation and re-installation should be the same; although, the icons and specific navigation may be slightly different.

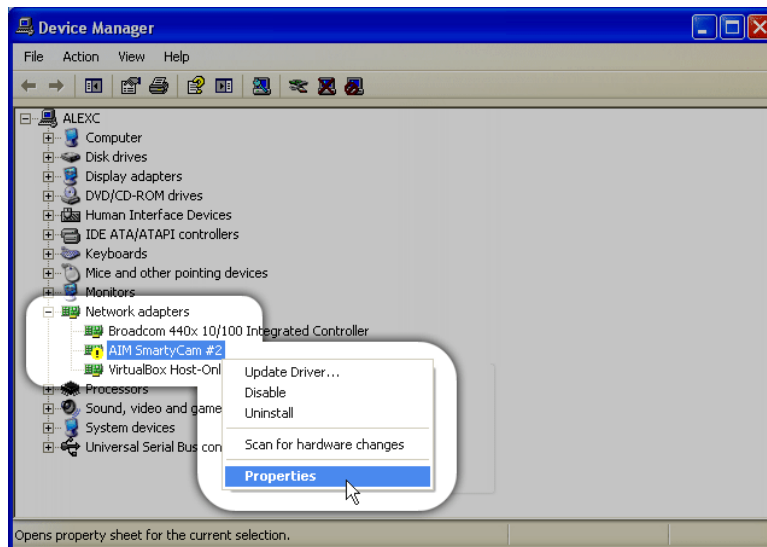
To begin USB driver uninstall process, start by going to the computer Desktop and right-clicking on **My Computer**. Once there, click on **Properties**. It is also possible to access **My Computer** through to the **Start** icon on the Desktop.



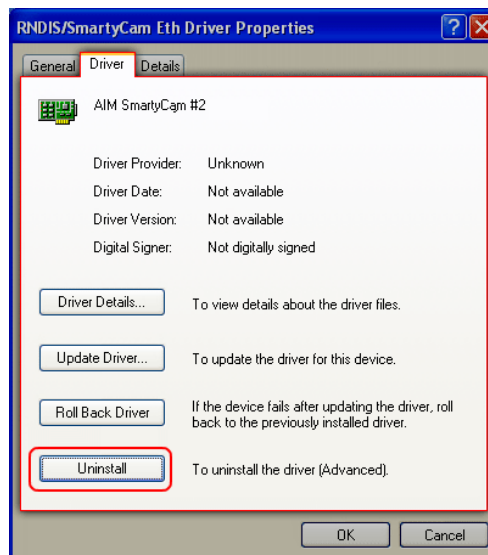
System Properties window will then appear.



In **System Properties** window, click on "Hardware" tab at the top and then click on "Device Manager" button located inside. "Device Manager Window" shows up.



Once inside of “Device Manager” window, scroll down to “Network adapters” icon and expand it. Under “Network adapters” heading is AIM **SmartyCam**. Right click on its icon, which will likely be identified by a yellow exclamation mark. Select “Properties” option.

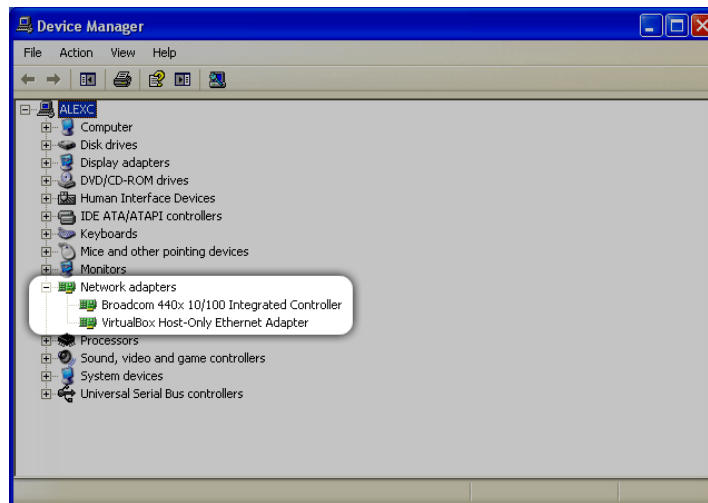


Once inside “Properties” window, go to “Driver” tab and click on “Uninstall” option.



Click “OK” to finalize the device driver removal.

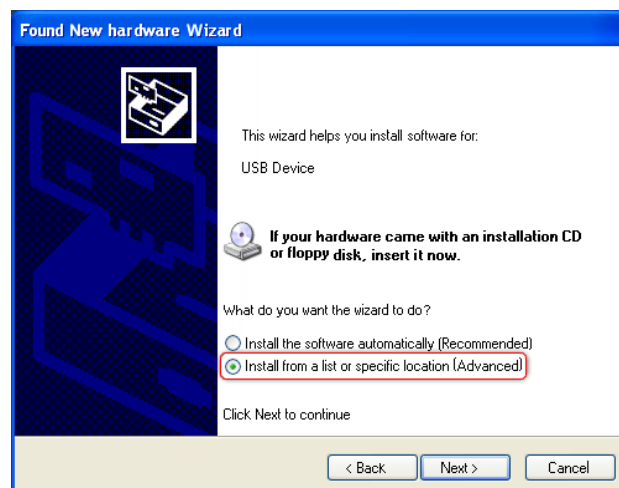
Once the un-installation process is complete, “Device Manager” window will no longer display AIM **SmartyCam** under “Network adapters” heading.



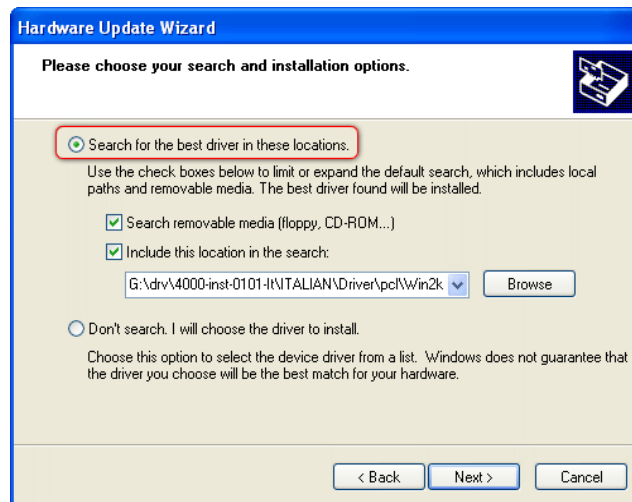
To reinstall the USB device drivers, unplug **SmartyCam** from the computer, wait a moment and then plug it back into the computer.



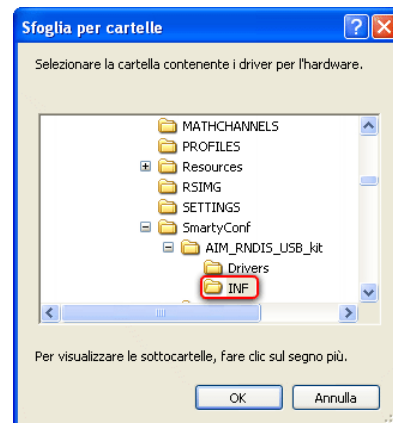
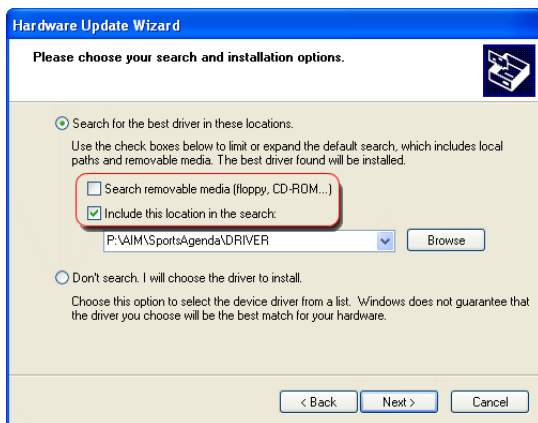
SmartyCam should be immediately recognized by the computer. Once “Found New Hardware Wizard” window appears, select “No, not this time” from the list of available option and click “Next >”.



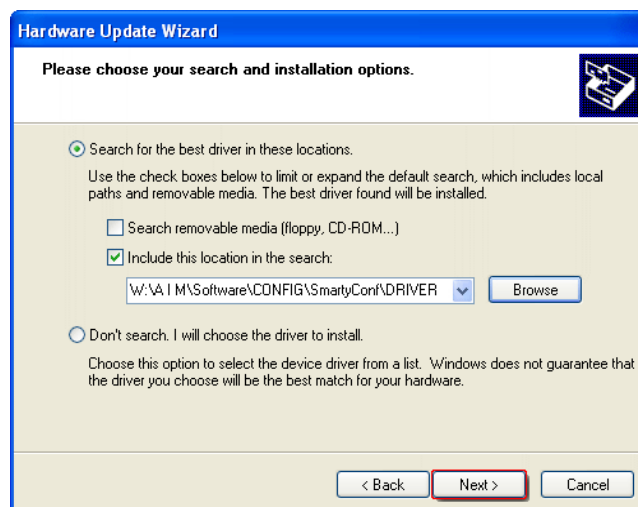
Select “Install from a list or specific location (Advanced)” option and click “Next >”.



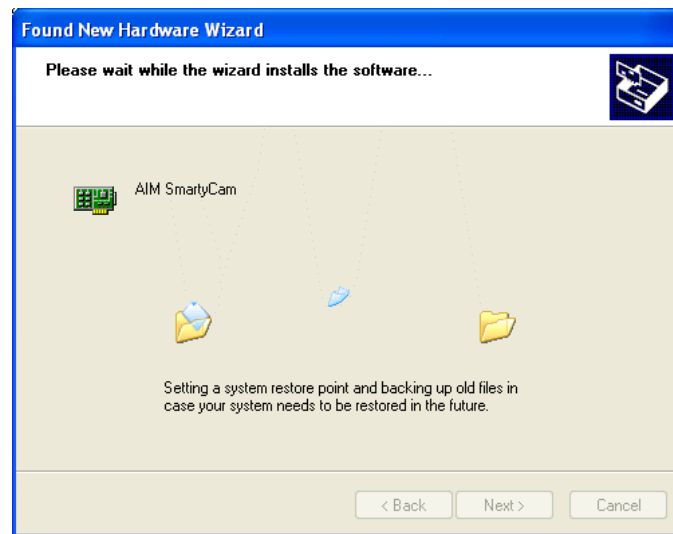
“Hardware Update Wizard” will then allow to choose where it should look for the device drivers. Select “Search for the best driver in these locations” option and disable “Search removable media (floppy, CD-ROM...)” option and click “Browse”.



“Browse for folder” window appears. Go to the following file location: My Computer/ Local Disk (C:)/Program Files/AIM/SmartyConf/AIM_RNDIS_USB_kit/ INF. Click “OK” once set the correct file path. “Include this location in the search” bar should read: **C:\Program Files\AIM\SmartyConf\AIM_RNDIS_USB_kit\INF** (Figure below).



Click “Next >” to begin to start the driver reinstallation process.



The USB device driver installation will then start the driver association process. This process may take a few minutes, please be patient.

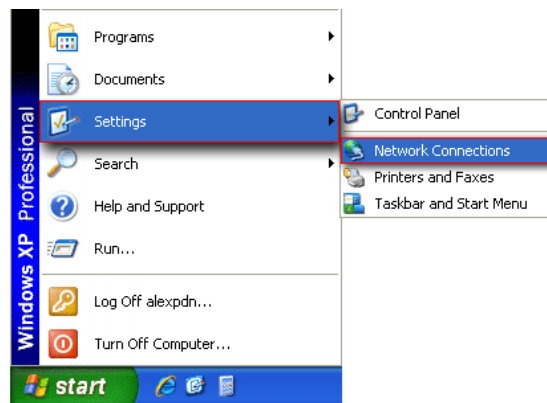


Windows may prompt regarding installation of the USB device drivers, click “Continue Anyway”. The USB device drivers should now be installed, click “Finish” to complete the installation.

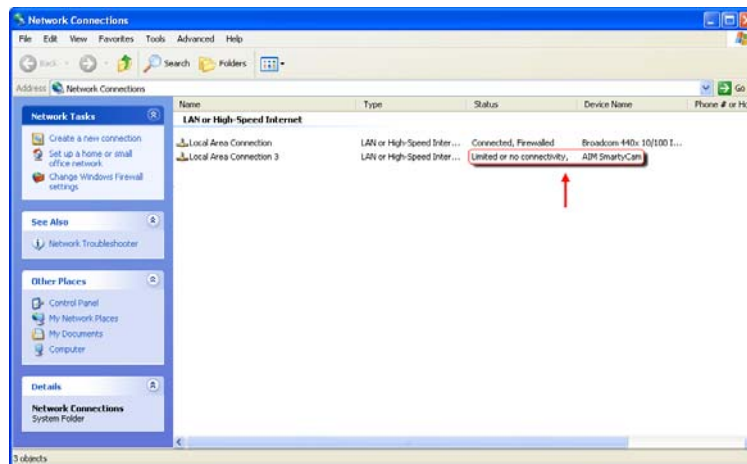
In rare cases, Windows will send a prompt warning that it is not possible to run the device driver installation because the hardware appears to be unplugged or missing. Should this prompt appear, unplug **SmartyCam** from the computer, wait a moment, and then plug it back in.

With the USB device drivers now reinstalled, the next step is to configure **SmartyCam** as a network, IP-based device.

To set **SmartyCam** up as a network device, go to Start/Settings/Network Connections.

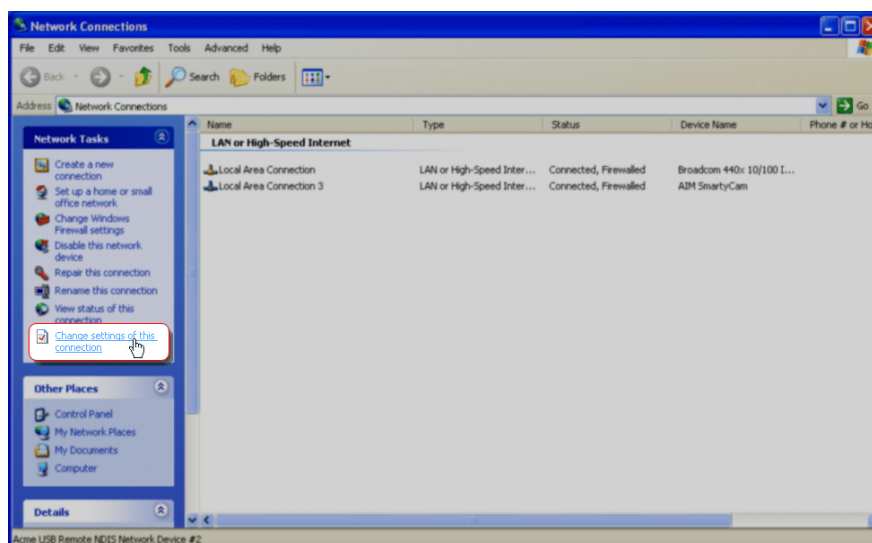


“Network connections” window appears:

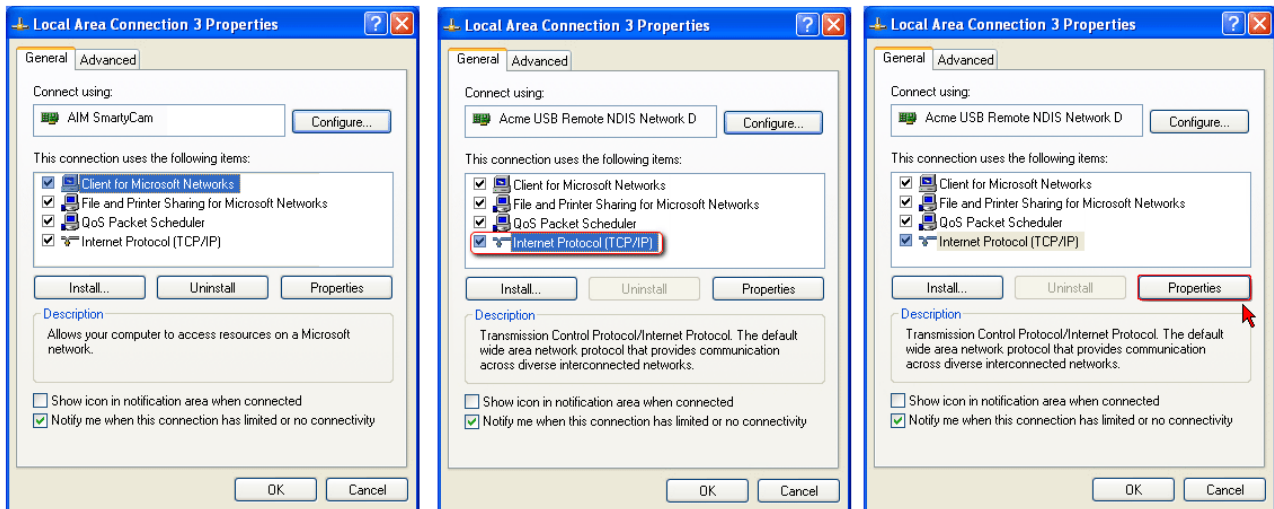


If properly configured, **SmartyCam** shows up in the “Network Connections” window. It will be listed under “LAN or High-Speed Internet” heading as AIM **SmartyCam**, and will indicate that the device has “limited or no connectivity” (above figure).

Select AIM **SmartyCam** from the list of available connections clicking on it. Once AIM **SmartyCam** selected, a modified menu option will appear on the left under the “Network Tasks” menu. Click on “Change settings of this connection” option.

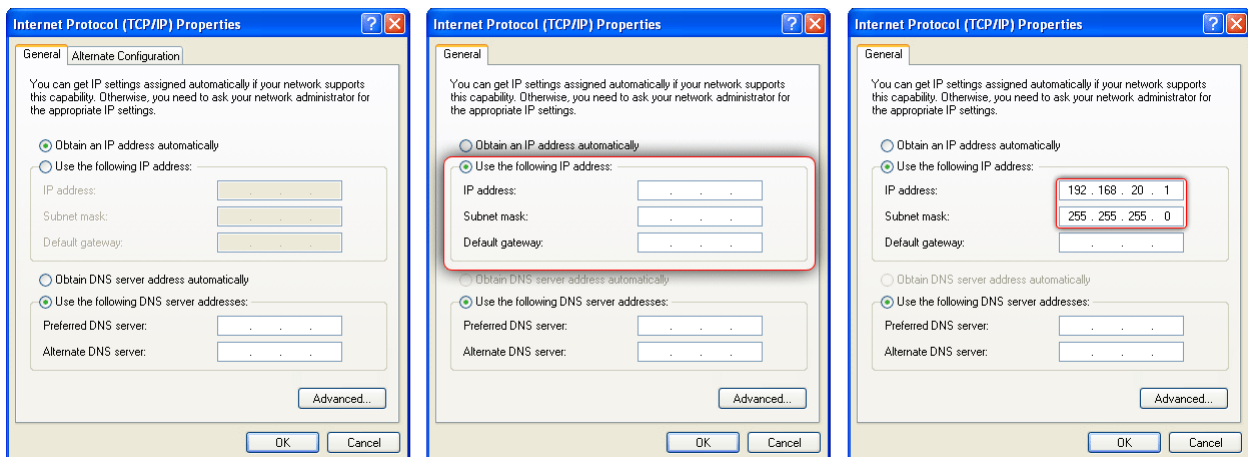


“Local Area Connection 3 Properties” window appears (first below on the left).



Under “General” tab, select “Internet Protocol (TCP/IP)” – central figure here above – and click “Properties” – figure here above on the right.

”Internet Protocol (TCP/IP) Properties window appears (first below on the left).



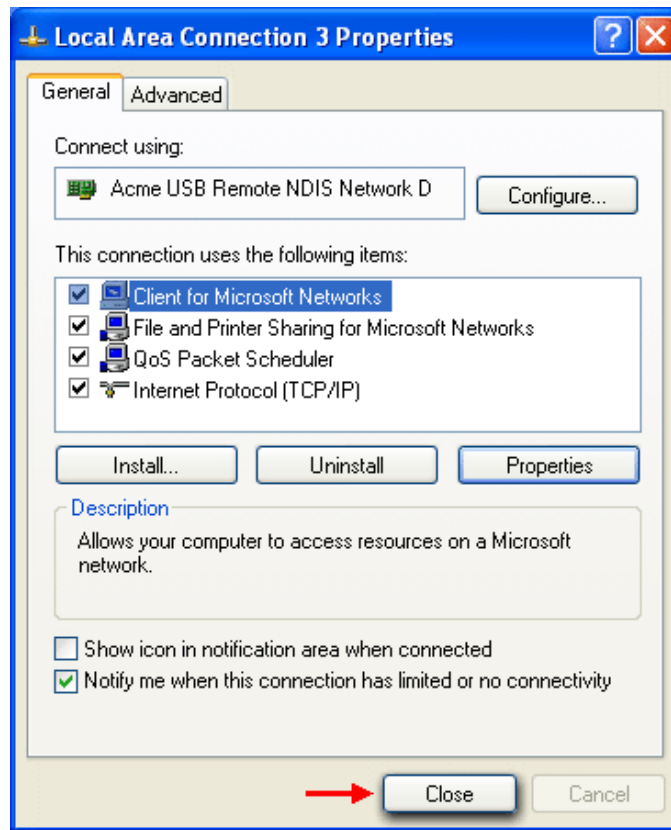
Select “Use the following IP address” option. If “IP address” and “Subnet mask” – central above figure – fields are empty, then insert the follow values – right above figure:

- **IP address: 192 168 20 1**
- **Subnet mask: 255 255 255 0**

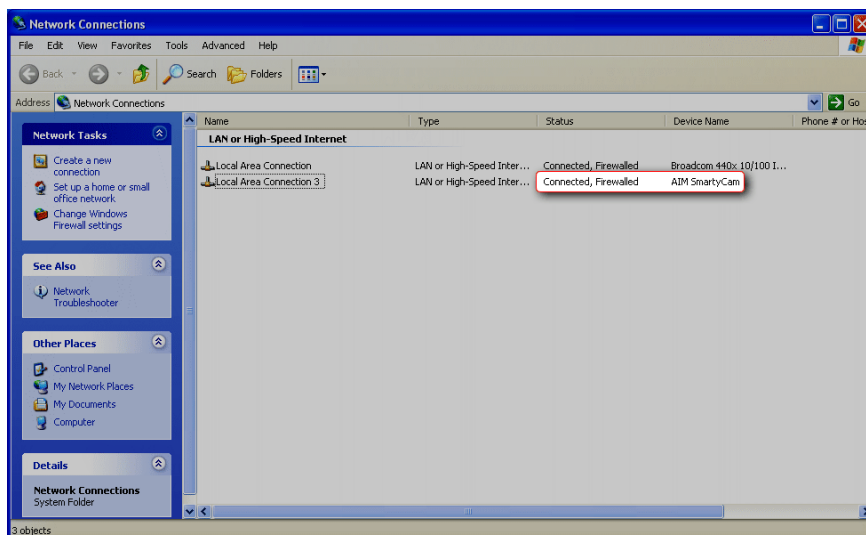
Use Tab key when navigating from field to field. Using the Spacebar may result in a false **IP address** or **Subnet mask value**.

Once these two fields are successfully filled in click **OK**.

The **Internet Protocol (TCP/IP) Properties** window will then close.



To finalize the device setup, click “Close” button at the bottom of “Local Area Connection 3 Properties” window. “Network Connections” window will now show AIM **SmartyCam** device as “Connected”.



SmartyCam device drivers have now been successfully re-installed. If, after completing the above outlined driver recovery procedure, **SmartyCam** will still not interface with the computer, please contact us at www.aimshop.com and a member of our Technical Service team will assist.