



FAQ

Frequently asked questions

Transmitting more than one configuration



Configuring

Transmitting more than one configuration

Question:

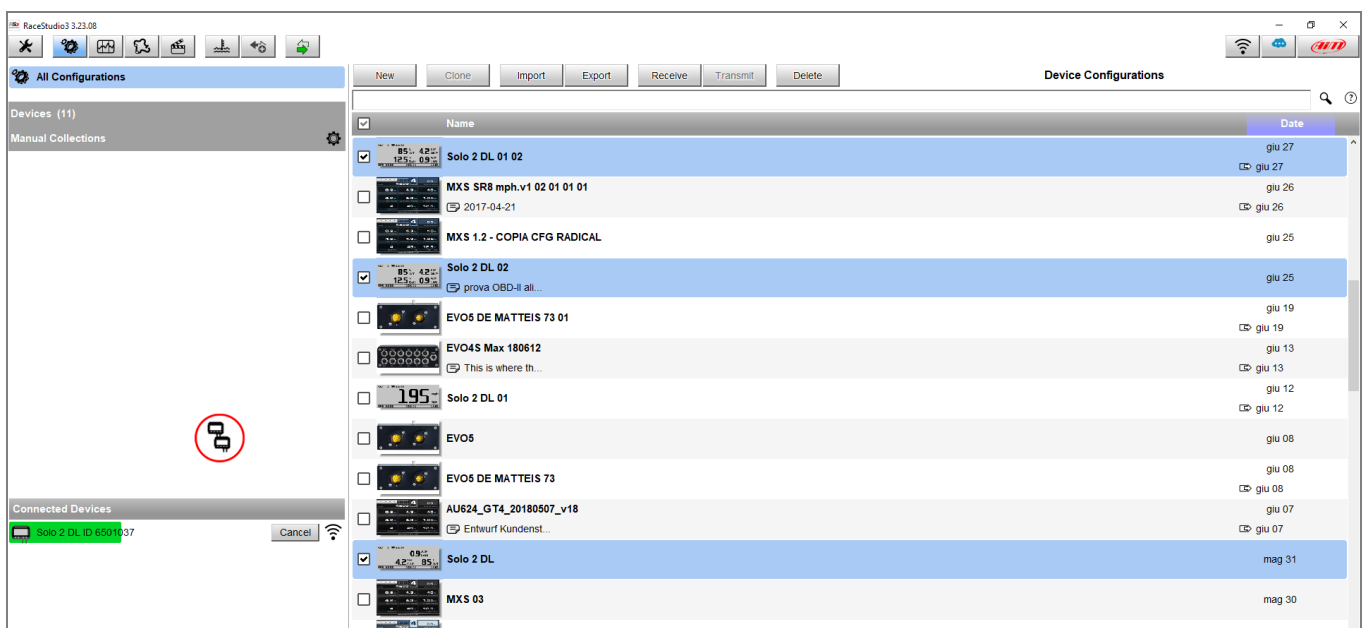
How can I transmit more than one configuration to my Solo 2 DL and how can I choose which one to enable?

Answer:

The function which allows to transmit more than one single configuration to the Solo 2 DL contemporarily has been introduced starting from the Race Studio 3 release n.**3.18.00**.

To make this, proceed as follows:

- Run Race Studio 3 and enter the "Configuration" section.
- Connect the system to the PC via Wi-Fi: it will appear in the Connected Devices list (lower left page corner).
- From the existing configurations list, select the ones to be transmitted to the device (up to a maximum of 10), ticking each one box and clicking "Transmit" (or drag and drop them on the connected device bar; a specific pointer will appear and a green bar will signal the transmission progression).
Once ended, a popup window will appear, which confirms the end of the process.



Configuring

- To choose which one among the transmitted configurations to enable, from the device itself enter in the MENU – System Settings -> Configuration (when only one configuration is transmitted to the device, the icon is not present).
- Pressing the CHANGE button, the list of the previously transmitted configurations appears: select the one to be enabled pressing the NEXT and PREV buttons, then click SELECT to select it.
- A confirm popup message appears: press YES and the system will automatically reset, enabling the chosen configuration.

