



AiM Infotech

Optical lap receiver Race Studio 2 configuration

Release 1.00



1

Introduction

Once the optical lap receiver physically connected to the device "Lap" channel, it is necessary to set this up so that the receiver is correctly managed. Refer to each device pinout to know where to connect the sensor.

2

Configuration with Race Studio 2

In this datasheet you will see how to configure AiM MXL and EVO4. For both: run the software, select the device in use and, for **EVO4**:

- enter "System Configuration" layer (1)
- set "Lap" (2) box
- press "Transmit" (3)

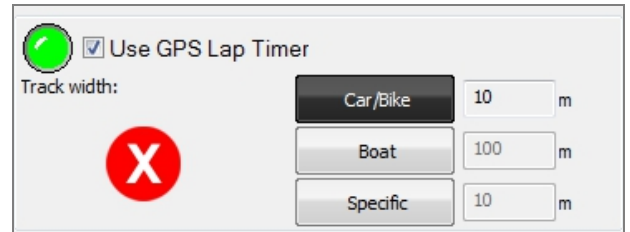
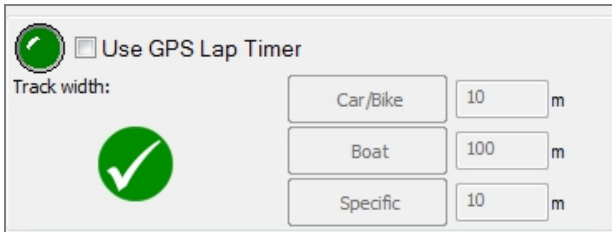
The screenshot shows the RaceStudio 2.55.34 software interface. The main window is titled "System manager" and contains several tabs: "Channels", "System configuration", "Display", and "CAN-Expansions configurator". The "System configuration" tab is active and highlighted with a red box and a circled "1".

The "System configuration" window is divided into several sections:

- RPM:** Includes "AIM sensor" (set to "ECU signal"), "RPM Factor" (set to "/ 1"), and "RPM max" (set to "16000").
- Gear sensor:** Includes "Gear sensor" (set to "None"), "ECU" (set to "ECU"), and "Highest gear number" (set to "6").
- Lap:** Includes "Obscuring time (sec.)" (set to "8"), "Lap segments" (set to "1"), and "Use GPS Lap Timer" (checked). The "Lap" section is highlighted with a red box and a circled "2".
- Reference speed:** Includes "Chan" (set to "Speed1").
- Output signal on pin 5 of RPM connector:** Includes "Signal" (set to "None").

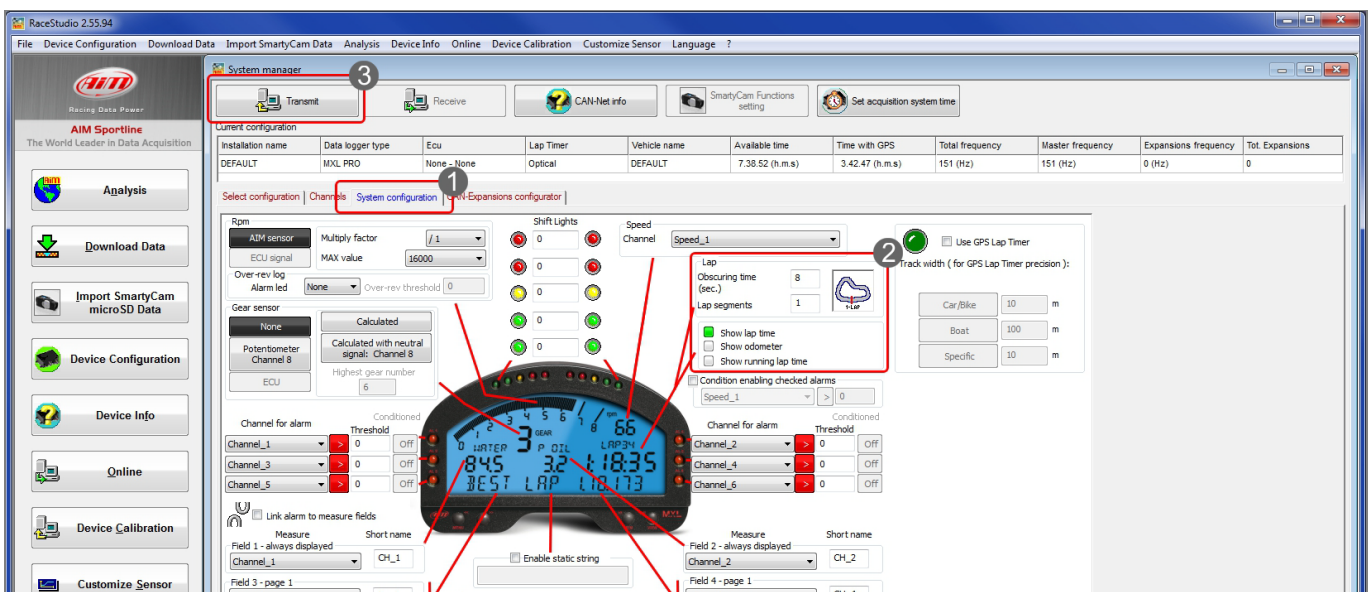
The "Transmit" button is highlighted with a red box and a circled "3".

Please note: ensure that "Use GPS Lap Timer" checkbox is not enabled.



For **MXL**:

- enter "System Configuration" layer (1)
- set "Lap" box (2)
- press "Transmit" (3)



Please note: ensure that "Use GPS Lap Timer" checkbox is not enabled.

