



AIMSHOP.COM



• LAP TIMERS • LOGGERS • CAMERAS • DASHES • SENSORS • AND MORE

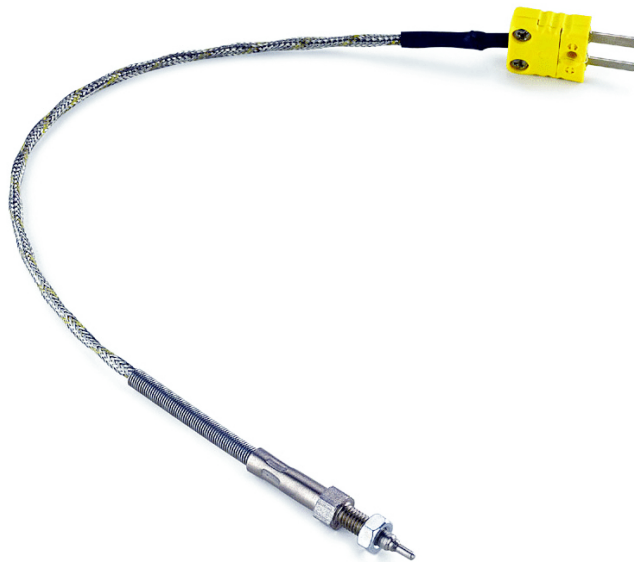
SHOP NOW

AiM Infotech

# K type thermocouple car/bike/kart installations Race Studio3 configuration

Release 1.00

---



VISIT SUPPORT CENTER

SOFTWARE DOWNLOADS

FIRMWARE UPDATES

PRODUCT DOCUMENTATION



# 1

## Introduction

---

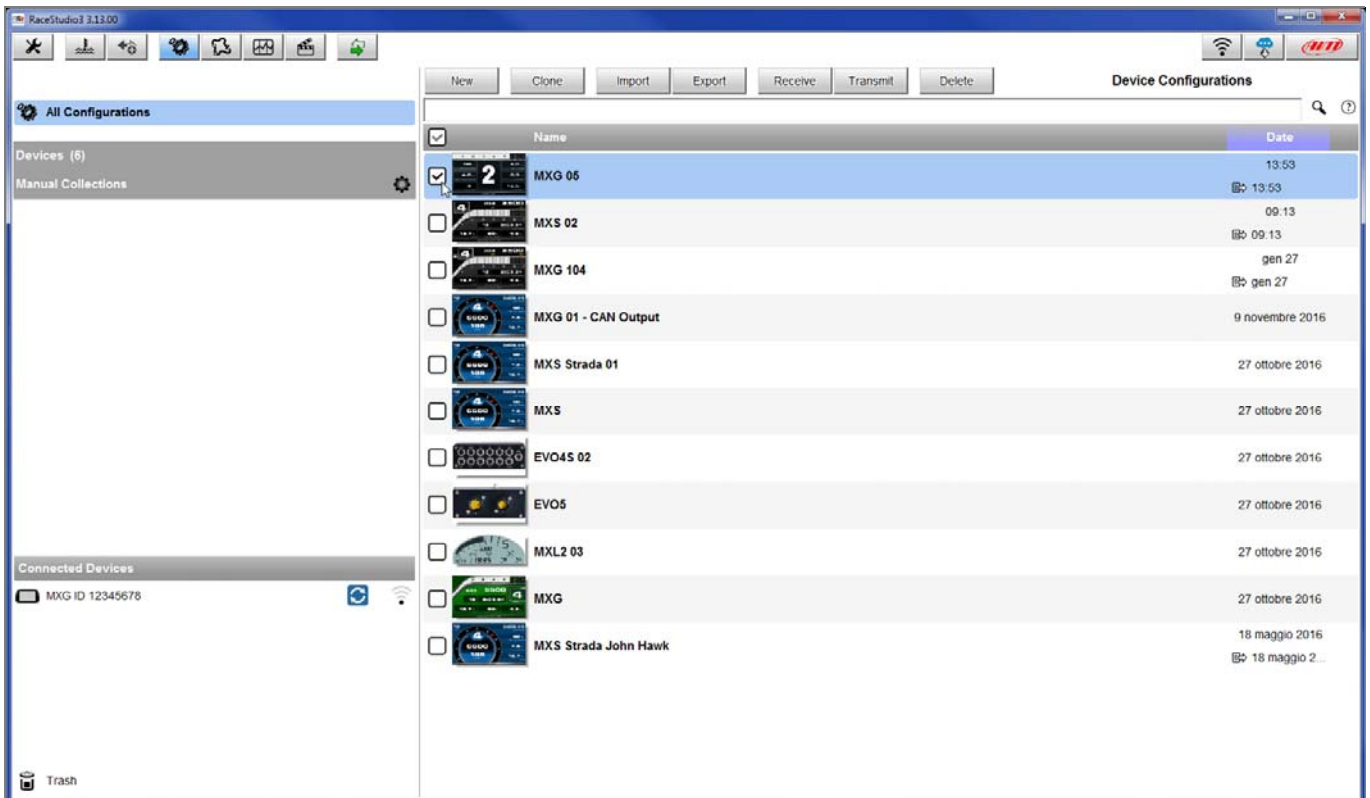
When the K type thermocouple is physically connected to one channel of AiM device it is necessary to load it in the related configuration using AiM configuration software. In this datasheet it is loaded using **Race Studio 3** software.

# 2

## Race Studio 3 configuration

---

To load the sensor in the device configuration run the software and select the configuration where to load it on (i.e. MXG 05):



The software enters "Channels" layer:

- select the channel where to set the sensor on – i.e. channel 1 (1) – and fill in the panel that shows up
- select the function "Temperature ->Temperature" (2)
- select sensor type: "K type thermocouple" (3)
- press "Save" (4)

