

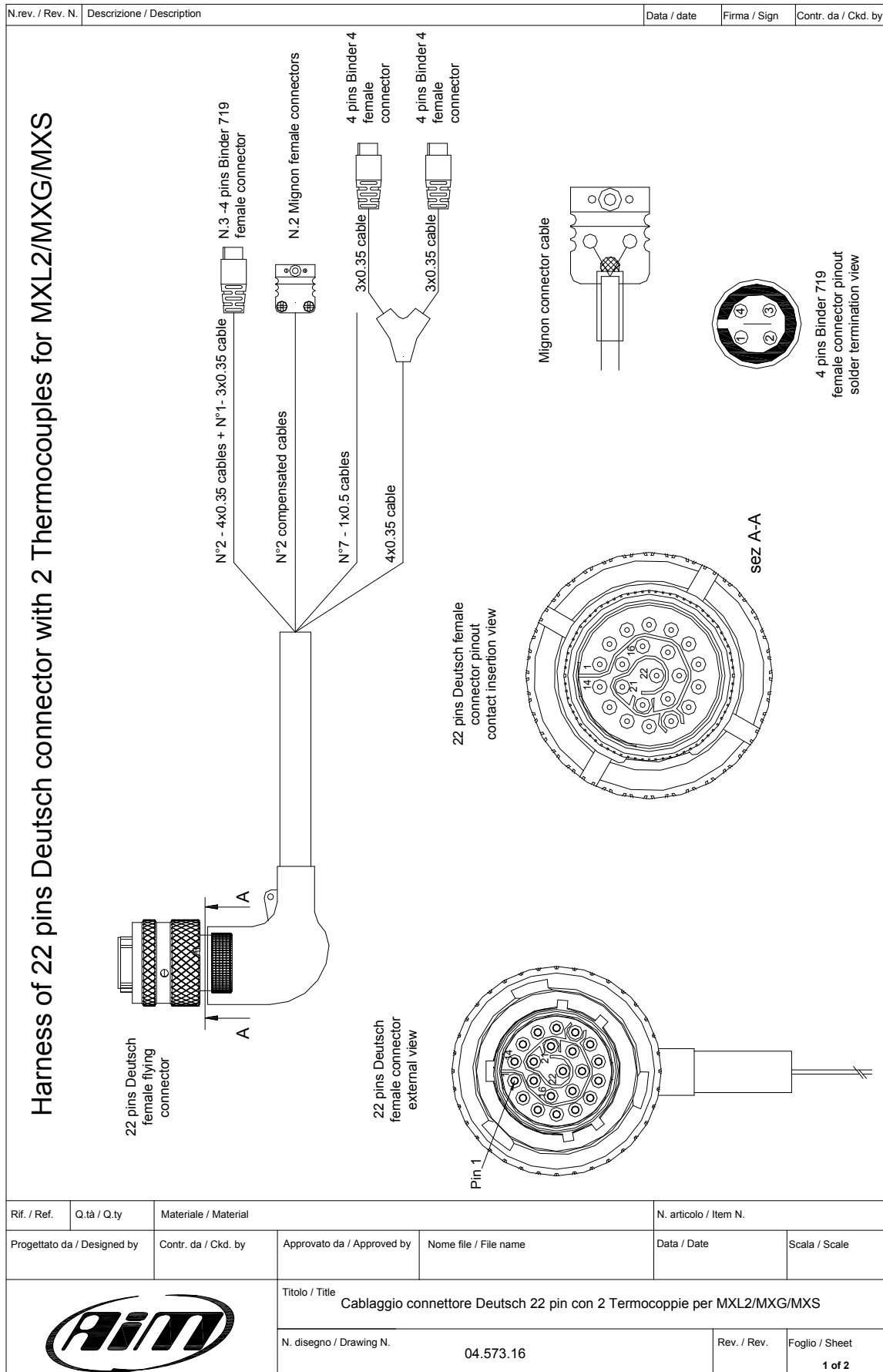


AiM Infotech

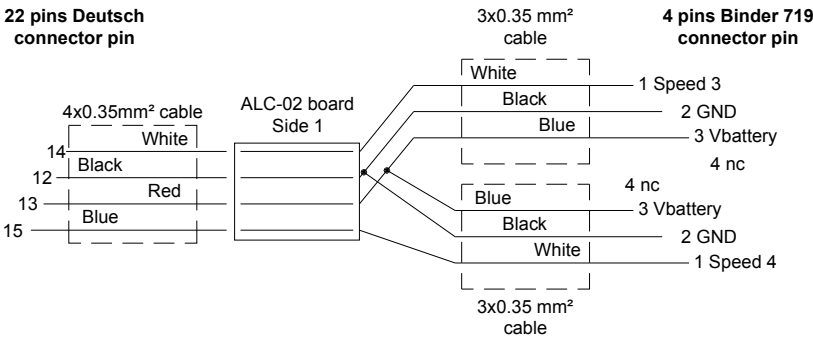
Cable for 22 pins Deutsch connector
with 2 thermocouples for
MXL2/MXG/MXS

Release 1.00






| | | | | |
|------------------|---------------------------|-------------|--------------|---------------------|
| N.rev. / Rev. N. | Descrizione / Description | Data / date | Firma / Sign | Contr. da / Ckd. by |
|------------------|---------------------------|-------------|--------------|---------------------|

| Table of cables ending with 4 pins Binder 719 female connectors | | | | | | |
|---|-------------------------------|----------------------|-----------------------|------------------------------|---|-----------|
| 22 pins Deutsch connector pin | Cable colour | Binder connector pin | Cable type | Length | Channel | Label |
| 6 7 8 9 | White Black Red Blue | 1 2 3 4 | 4x0.35mm ² | 400mm | Analog channel 7 GND Vbattery Vreference | Channel 7 |
| 10 7 8 9 | White Black Red Blue | 1 2 3 4 | 4x0.35mm ² | 400mm | Analog channel 8 GND Vbattery Vreference | Channel 8 |
| 11 12 13 | White Black Blue nc | 1 2 3 4 | 3x0.35mm ² | 320mm | Speed 2 GND Vbattery nc | Speed 2 |
| 22 pins Deutsch connector pin | | | | 3x0.35 mm ² cable | 4 pins Binder 719 connector pin | |
|  | | | | | Speed 3 | Speed 4 |

| Tables of cables ending with Mignon connectors | | | | | | |
|--|---------------|----------------------|-------------|--------|---------------------------|-----------|
| 22 pins Deutsch connector pin | Cable colour | Binder connector pin | Cable type | Length | Channel | Label |
| 1 2 | Yellow Red | + - | Compensated | 380 mm | Analogic channel 5 GND | Channel 5 |
| 5 2 | Yellow Red | + - | Compensated | 380 mm | Analogic channel 6 GND | Channel 6 |

| Table of non cabled cables | | | | |
|-------------------------------|---|---|--------|---|
| 22 pins Deutsch connector pin | Cable colour | Cable type | Length | Label |
| 19 20 | White Blue | 1x0.5 mm ² 1x0.5 mm ² | 550 mm | Digital Output 1 Digital Output 2 |
| 17 18 16 21 22 | White Blue Black Blue White | 1x0.5 mm ² 1x0.5 mm ² 1x0.5 mm ² 1x0.5 mm ² 1x0.5 mm ² | 550 mm | CAN2+ CAN2- GND RS232TX RS232RX |

| | | | | | | |
|---|-------------|----------------------|--|-----------------------|----------------|---------------|
| Rif. / Ref. | Q.tà / Q.ty | Materiale / Material | | N. articolo / Item N. | | |
| Progettato da / Designed by | | Contr. da / Ckd. by | Approvato da / Approved by | Nome file / File name | Data / Date | Scala / Scale |
|  | | | Titolo / Title | | | |
| | | | Cablaggio connettore Deutsch 22 pin con 2 Termocoppie per MXL2/MXG/MXS | | | |
| N. disegno / Drawing N. | | | 04.573.16 | Rev. / Rev. | Foglio / Sheet | |
| | | | | | 2 of 2 | |